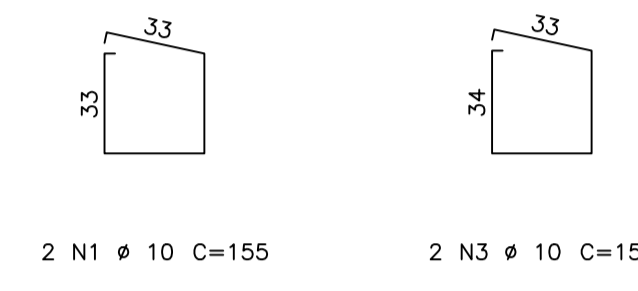
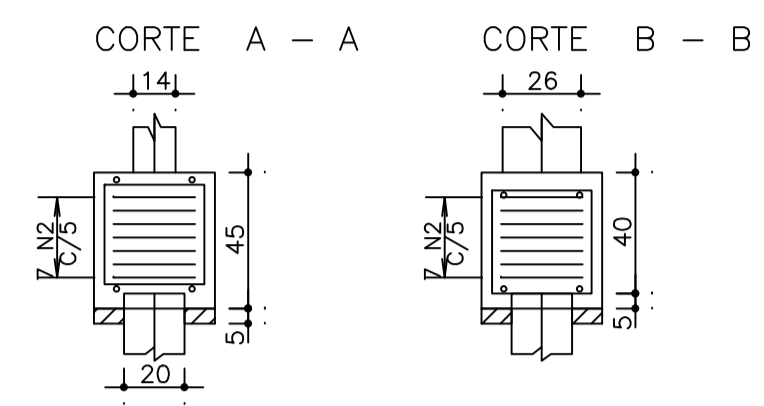
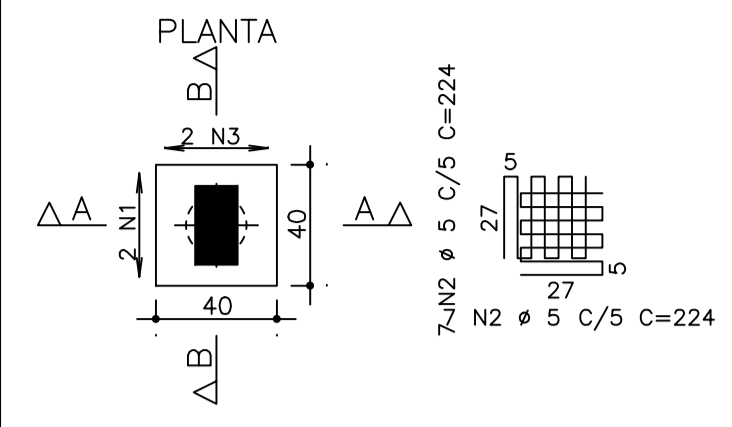
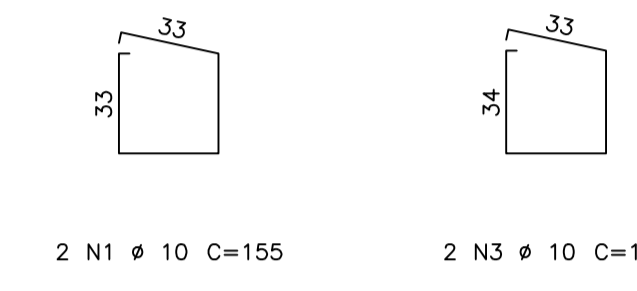
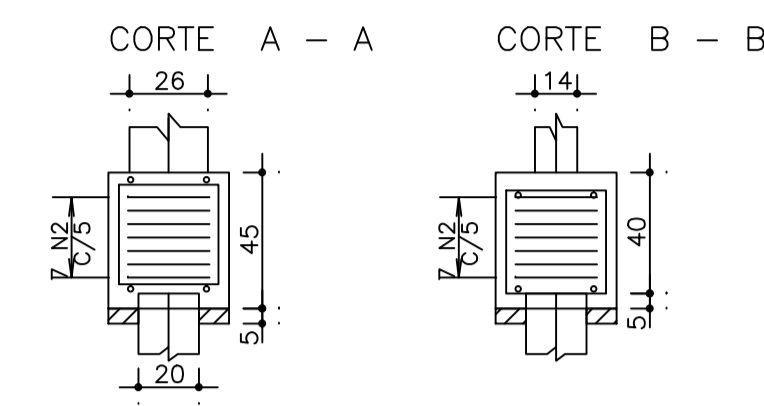
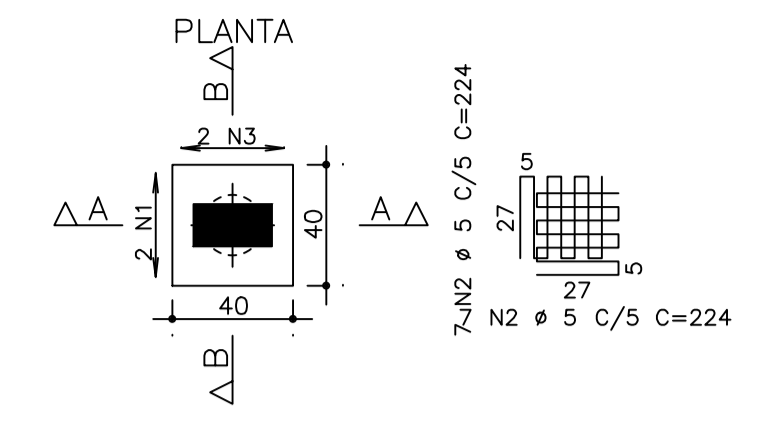


B12 (ESCALA 1:25)



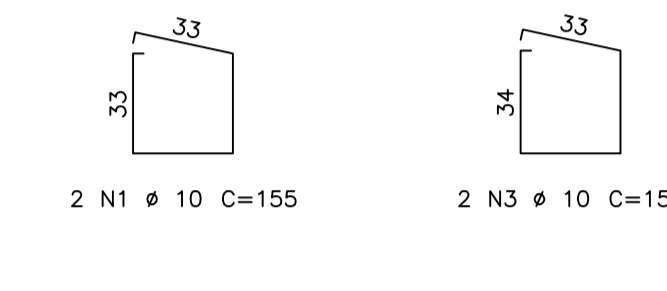
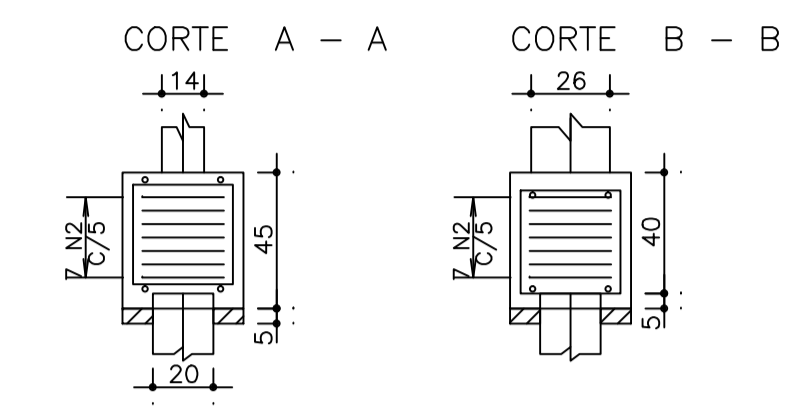
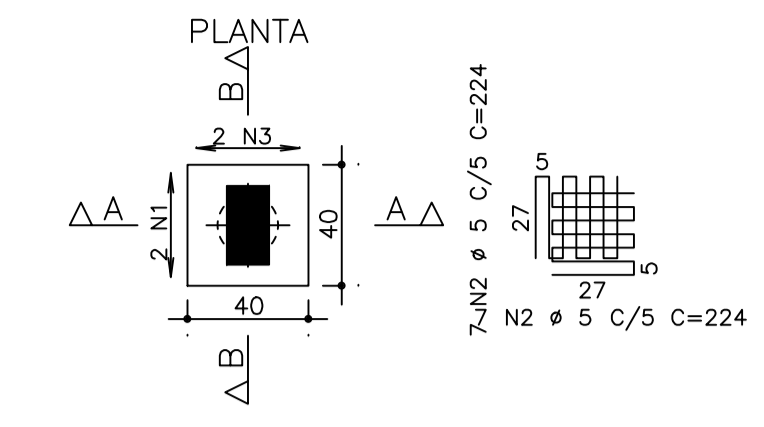
2 N1 ø 10 C=155 2 N3 ø 10 C=157

B13 (ESCALA 1:25)



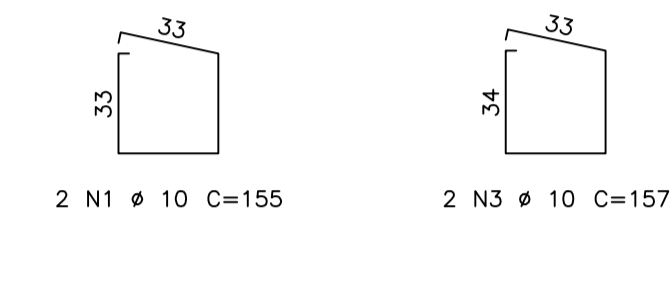
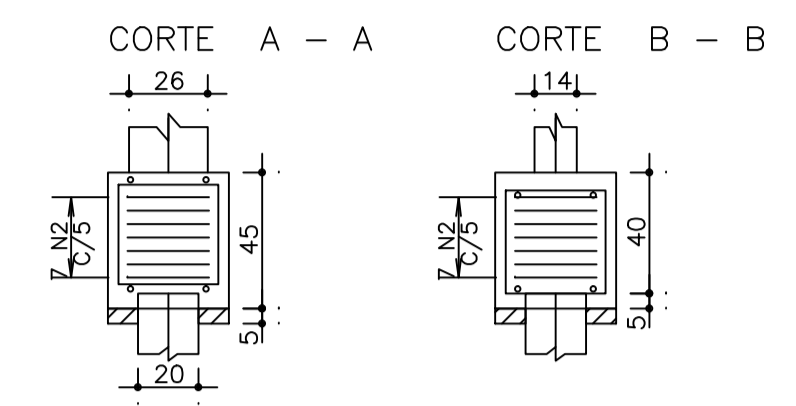
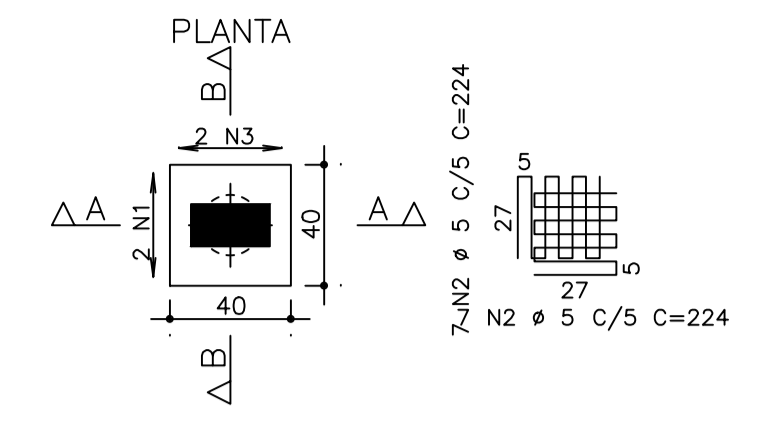
2 N1 ø 10 C=155 2 N3 ø 10 C=157

B14 (ESCALA 1:25)



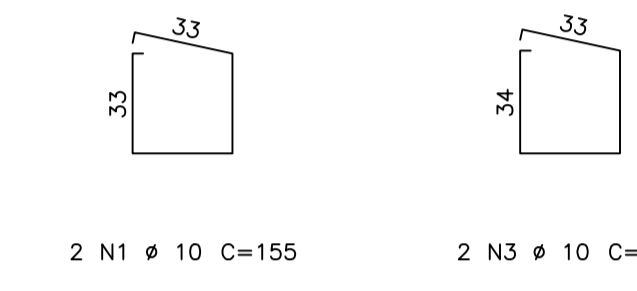
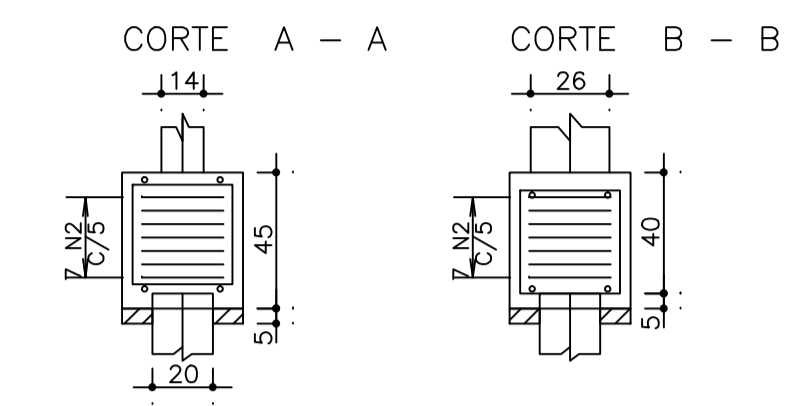
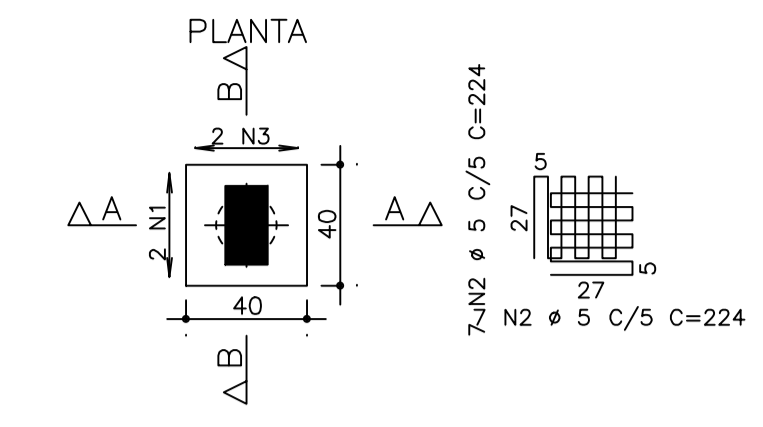
2 N1 ø 10 C=155 2 N3 ø 10 C=157

B15 (ESCALA 1:25)



2 N1 ø 10 C=155 2 N3 ø 10 C=157

B16 (ESCALA 1:25)

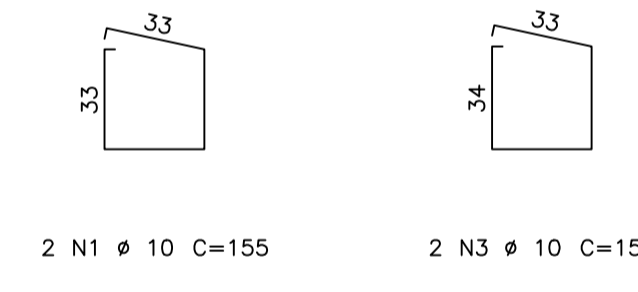
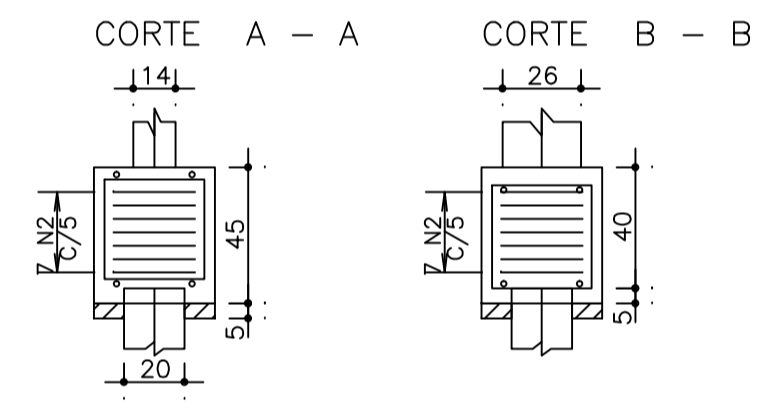
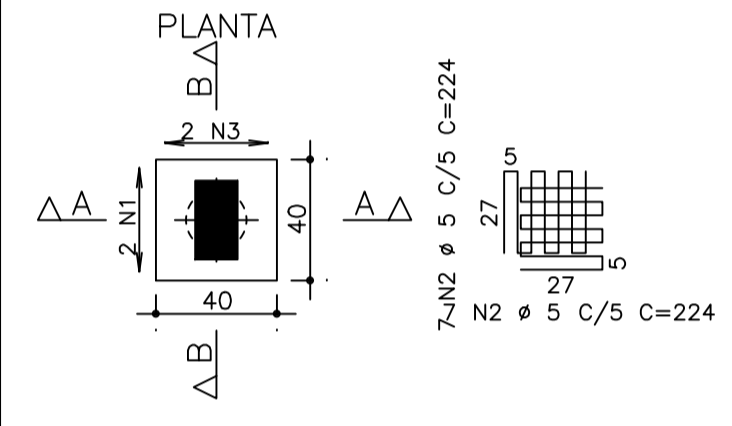


2 N1 ø 10 C=155 2 N3 ø 10 C=157

AÇO	POS	BIT (mm)	QUANT	COMPRIMENTO		
				UNIT (cm)	TOTAL (cm)	
B12	50A	1	10	2	155	310
	60B	2	5	14	224	3136
	50A	3	10	2	157	314
B13	50A	1	10	2	155	310
	60B	2	5	14	224	3136
	50A	3	10	2	157	314
B14	50A	1	10	2	155	310
	60B	2	5	14	224	3136
	50A	3	10	2	157	314
B15	50A	1	10	2	155	310
	60B	2	5	14	224	3136
	50A	3	10	2	157	314
B16	50A	1	10	2	155	310
	60B	2	5	14	224	3136
	50A	3	10	2	157	314
B17	50A	1	10	2	155	310
	60B	2	5	14	224	3136
	50A	3	10	2	157	314
B18	50A	1	10	2	155	310
	60B	2	5	14	224	3136
	50A	3	10	2	157	314
B19	50A	1	10	2	155	310
	60B	2	5	14	224	3136
	50A	3	10	2	157	314
B20	50A	1	10	2	155	310
	60B	2	5	14	224	3136
	50A	3	10	2	157	314

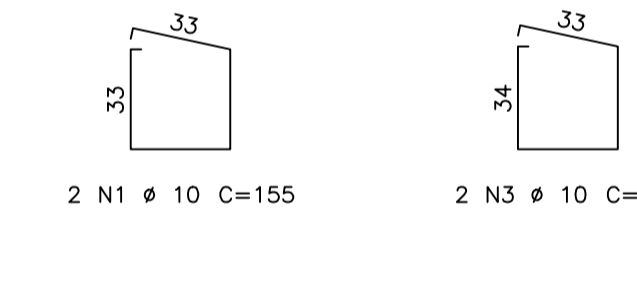
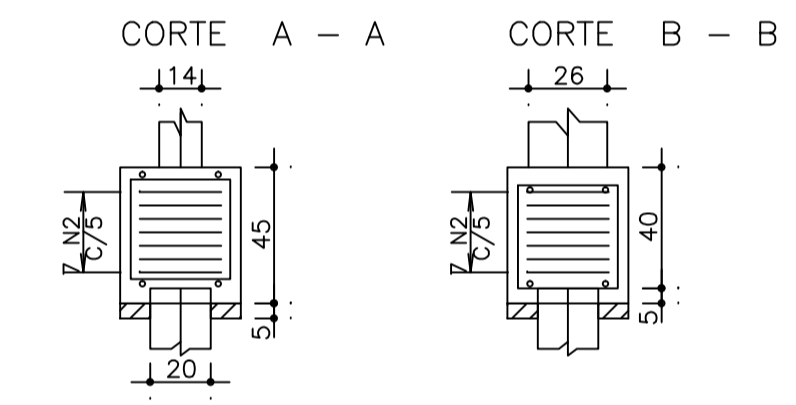
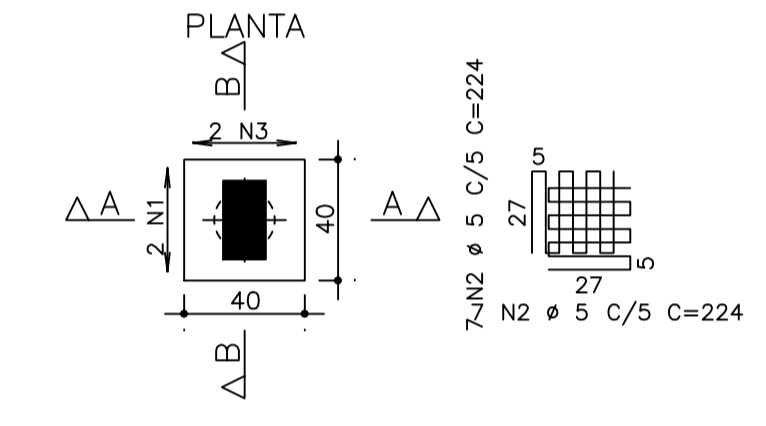
RESUMO AÇO CA 50-60			
AÇO	BIT (mm)	COMPR (m)	PESO (kg)
60B	5	282	43
50A	10	56	35
Peso Total		60B =	43 kg
Peso Total		50A =	35 kg

B17 (ESCALA 1:25)



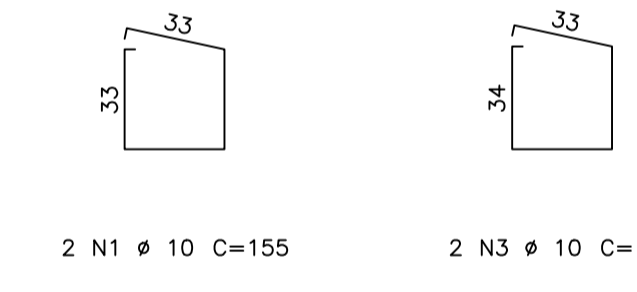
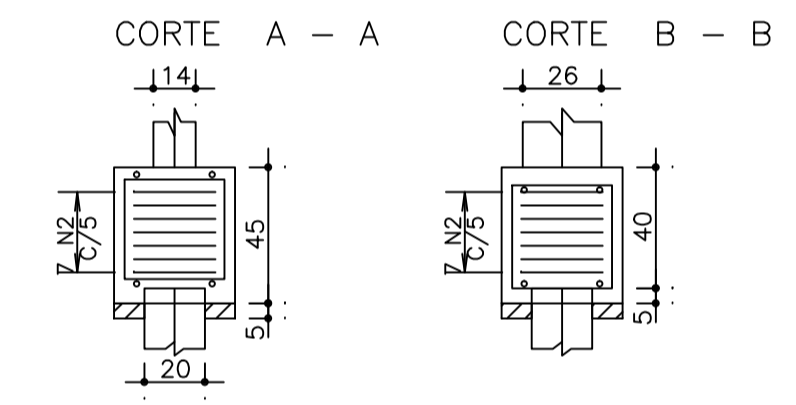
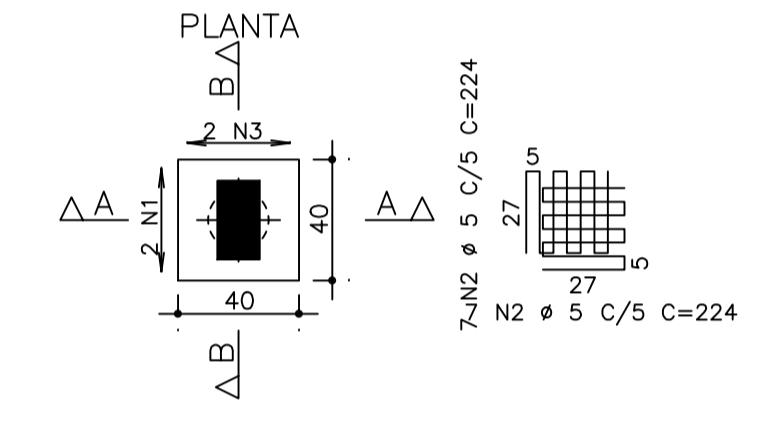
2 N1 ø 10 C=155 2 N3 ø 10 C=157

B18 (ESCALA 1:25)



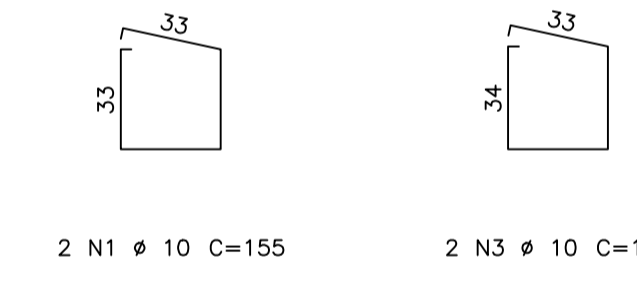
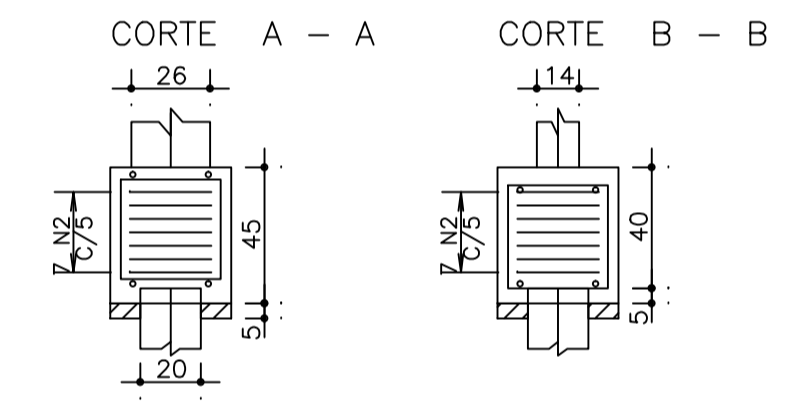
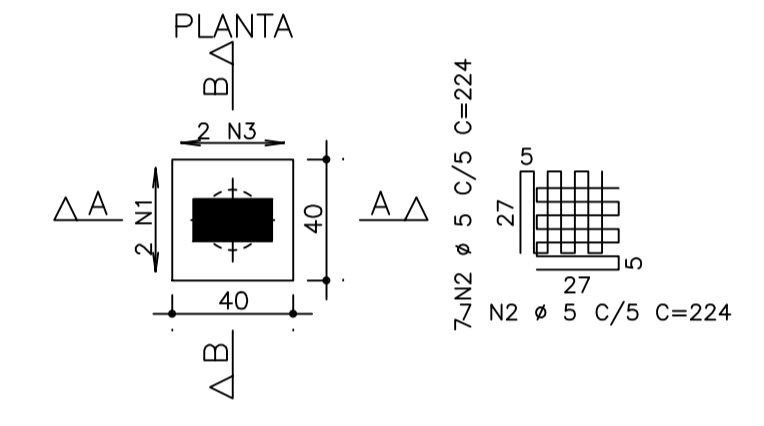
2 N1 ø 10 C=155 2 N3 ø 10 C=157

B19 (ESCALA 1:25)

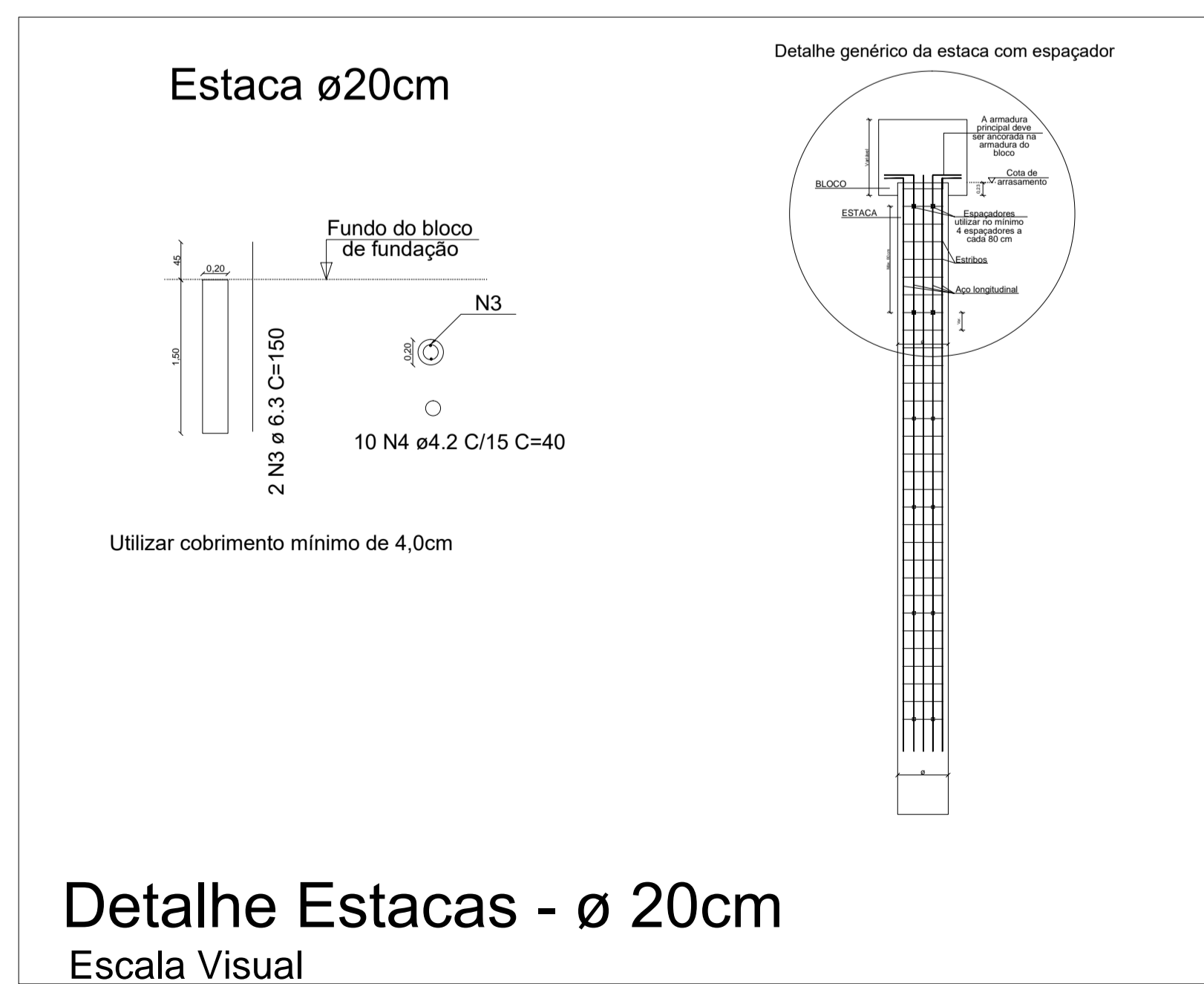


2 N1 ø 10 C=155 2 N3 ø 10 C=157

B20 (ESCALA 1:25)



2 N1 ø 10 C=155 2 N3 ø 10 C=157



PROJETO ESTRUTURAL RAMPA E ESCADA			
Dados da Edificação:		Adequações C.E.I.M Chapeuzinho Vermelho SECRETARIA DA EDUCAÇÃO, CULTURA E ESPORTES Dep. Ensino Fund. e Infantil MUNICÍPIO DE XAVANTINA - SC	
PROPRIETÁRIO:	Conteúdo:	Raphaela Renata Palauro Engenheira Civil - CREA/SC: 126597-4	
Município de Xavantina	- FUNDAÇÕES		
Revisão:	Escala:	Data:	Dez/2020
REV 00	indicada	Concreto: Fck= 300 Kgf/cm² Brita n.º 1 e n.º 2 Slump = 10 +- 2	03/11