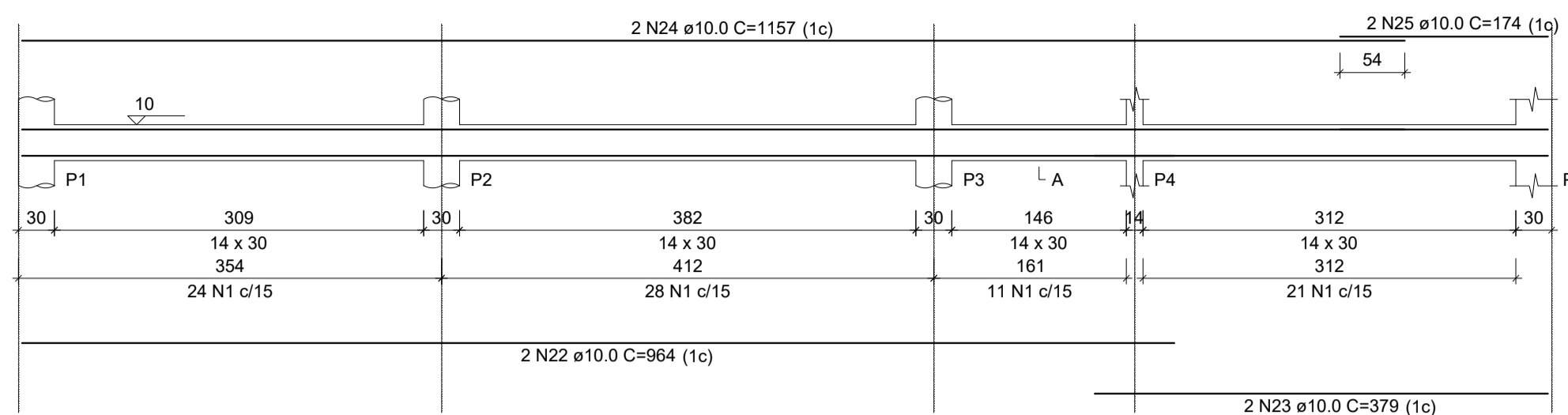
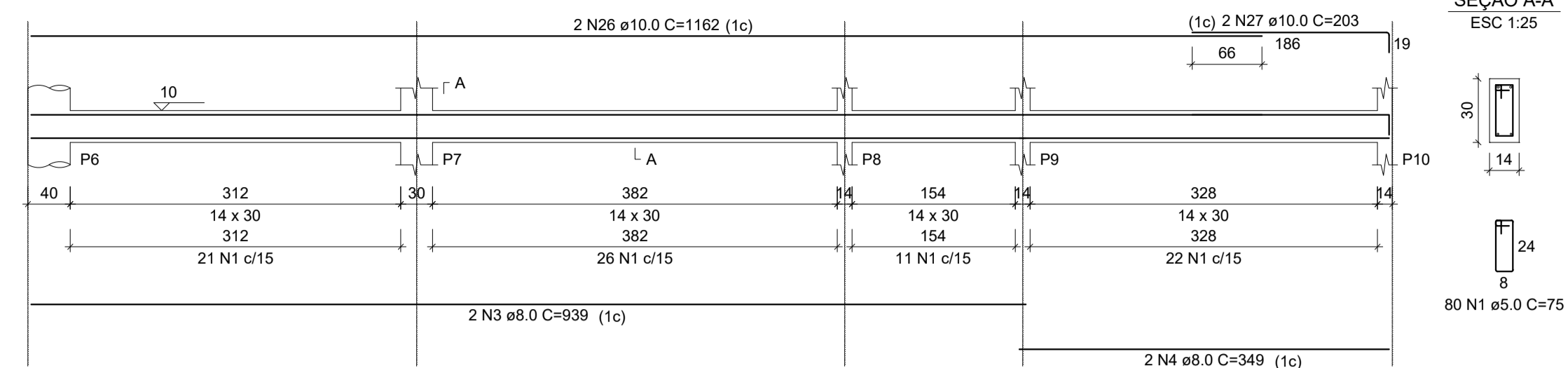


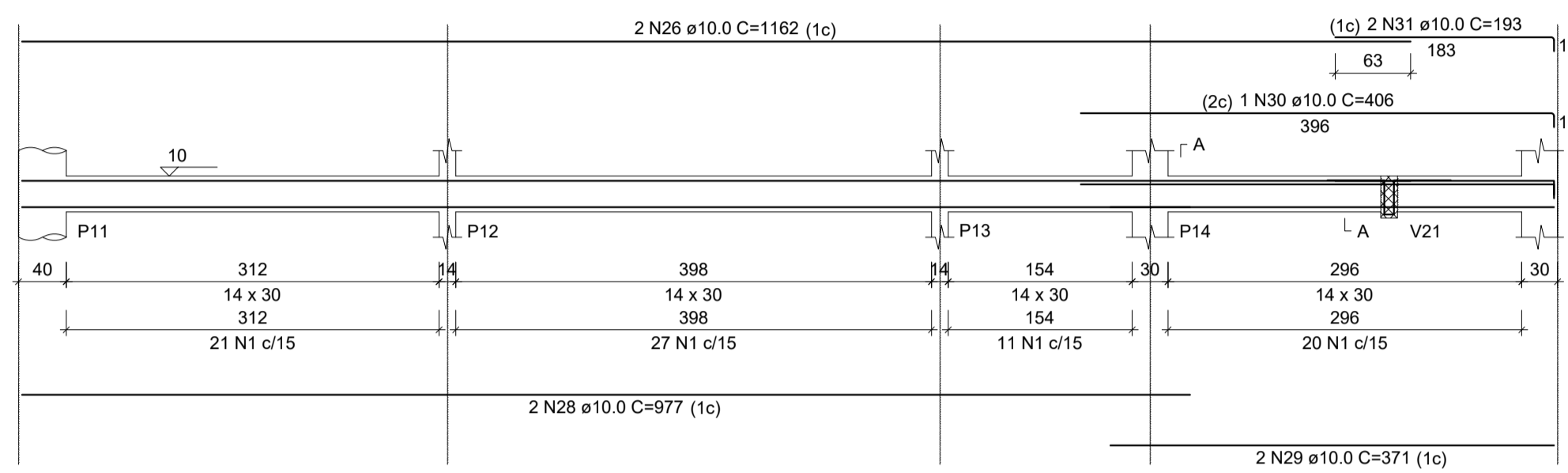
V1
ESC 1:50



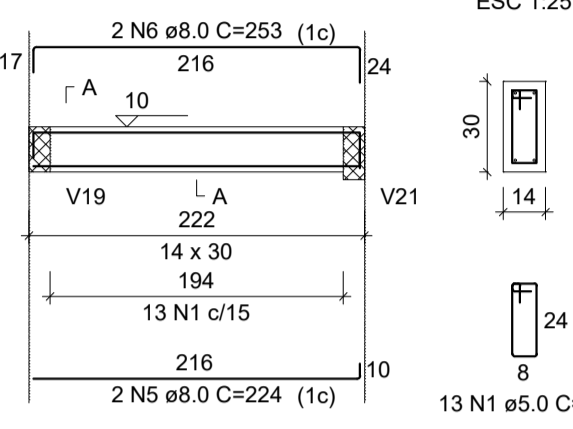
V2
ESC 1:50



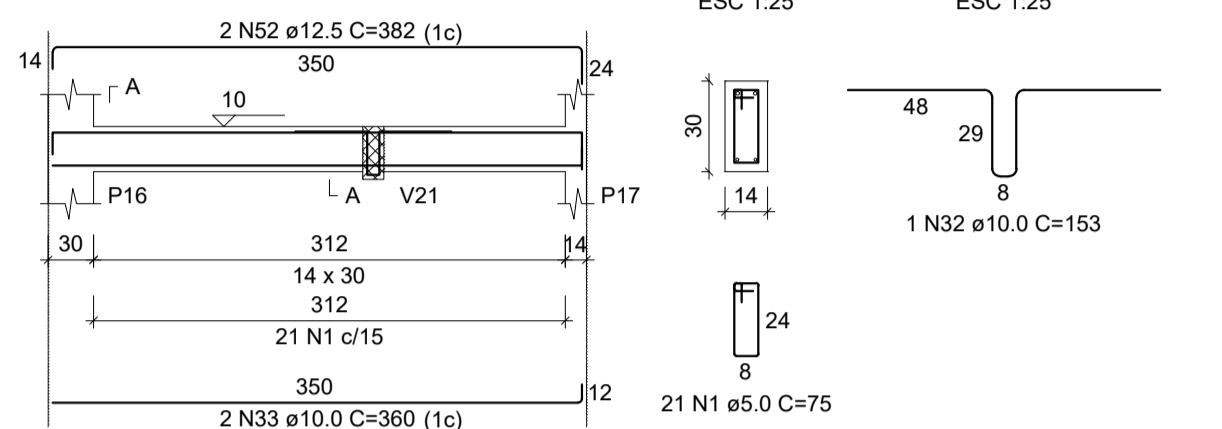
V3
ESC 1:50



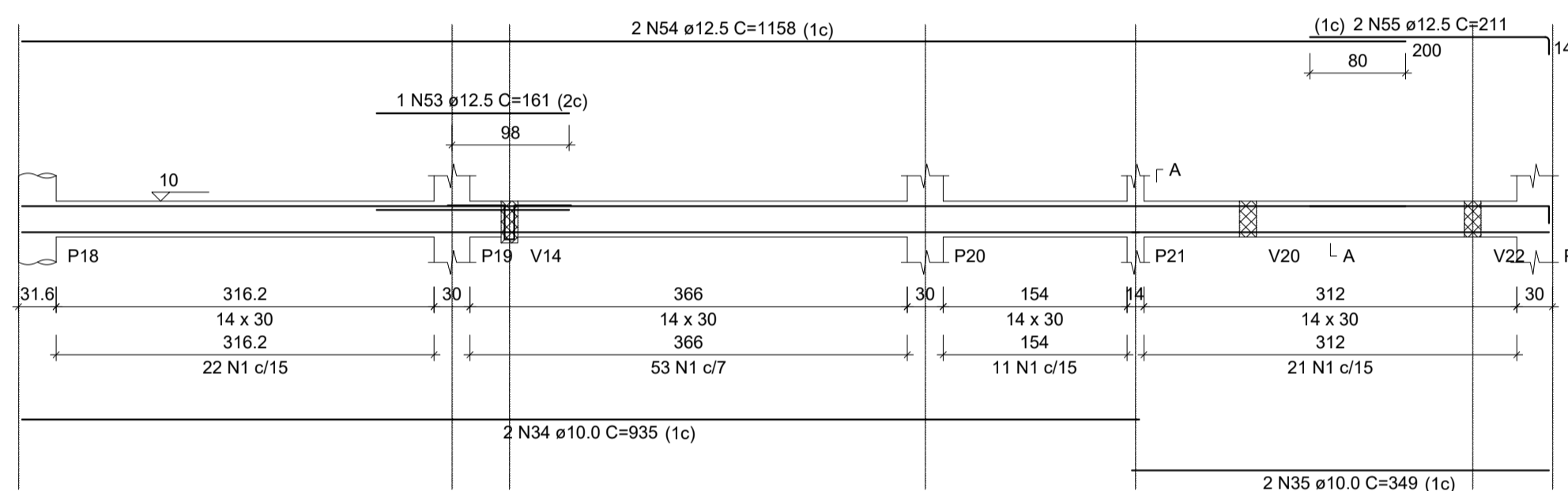
V4
ESC 1:50



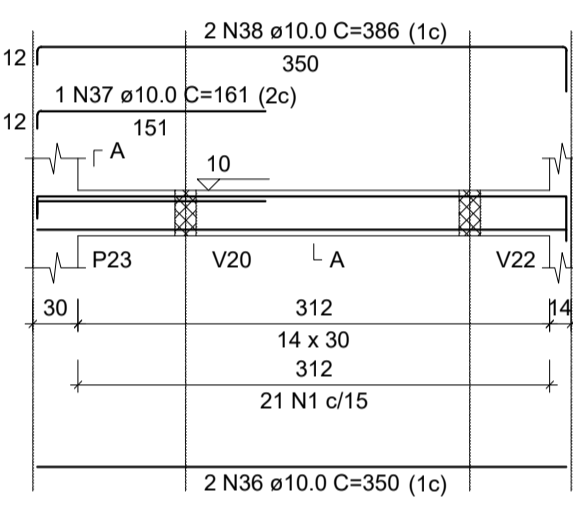
V5
ESC 1:50



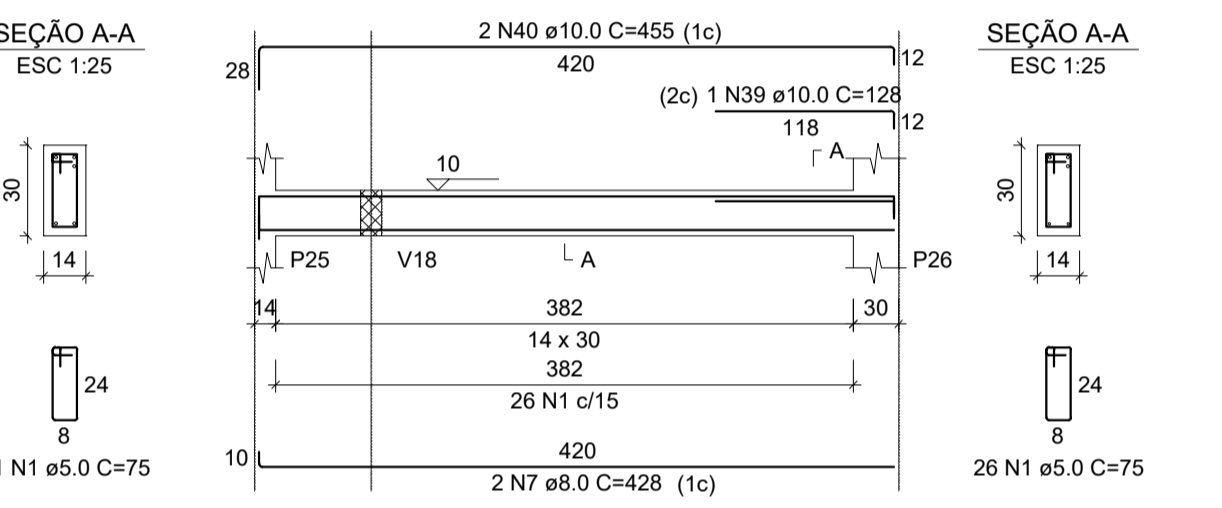
V6
ESC 1:50



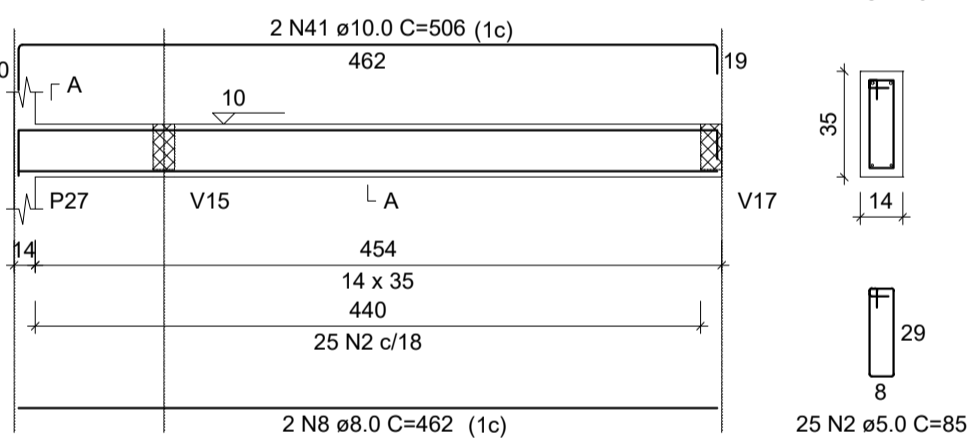
V7
ESC 1:50



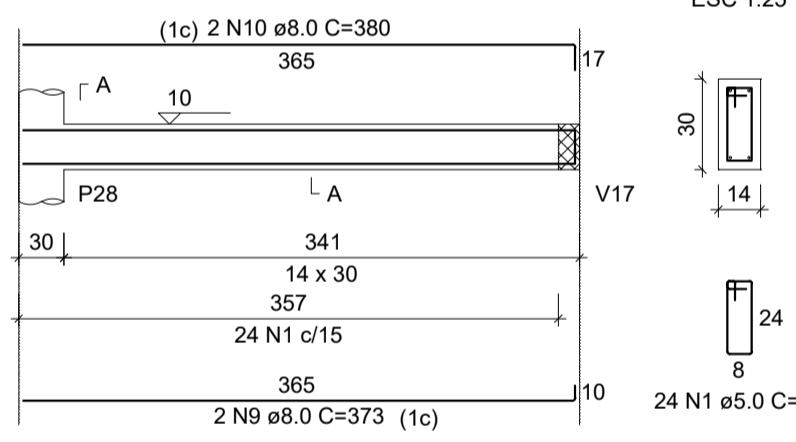
V8
ESC 1:50



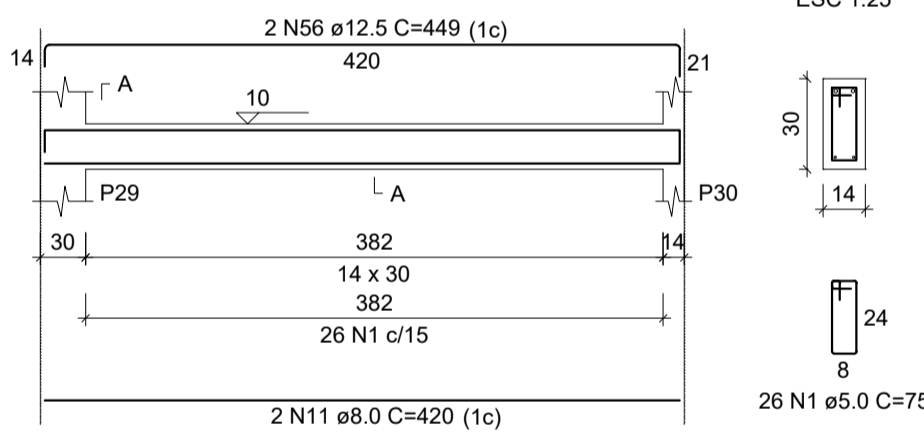
V9
ESC 1:50



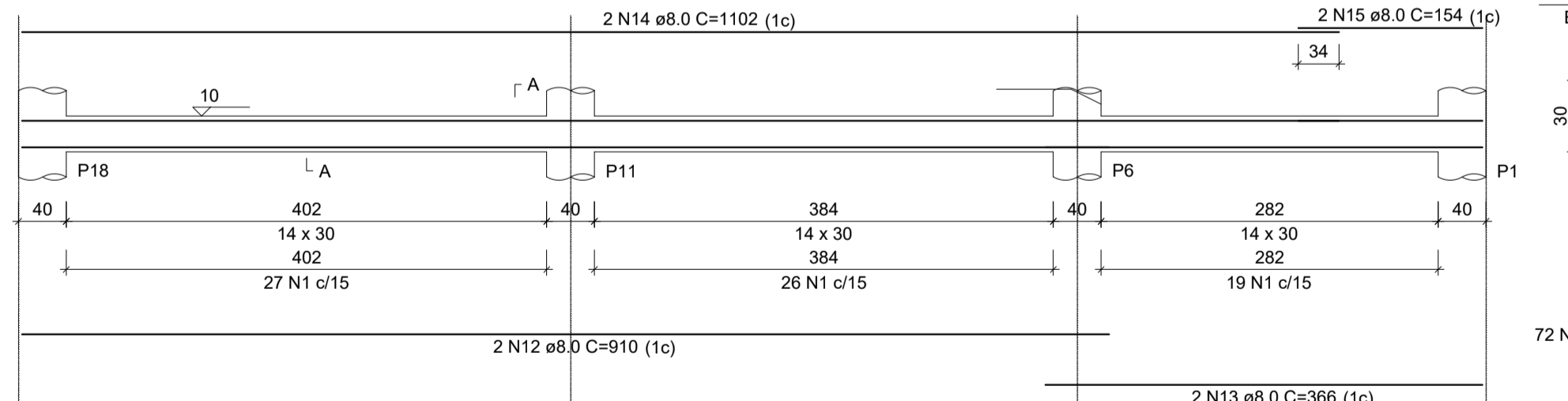
V10
ESC 1:50



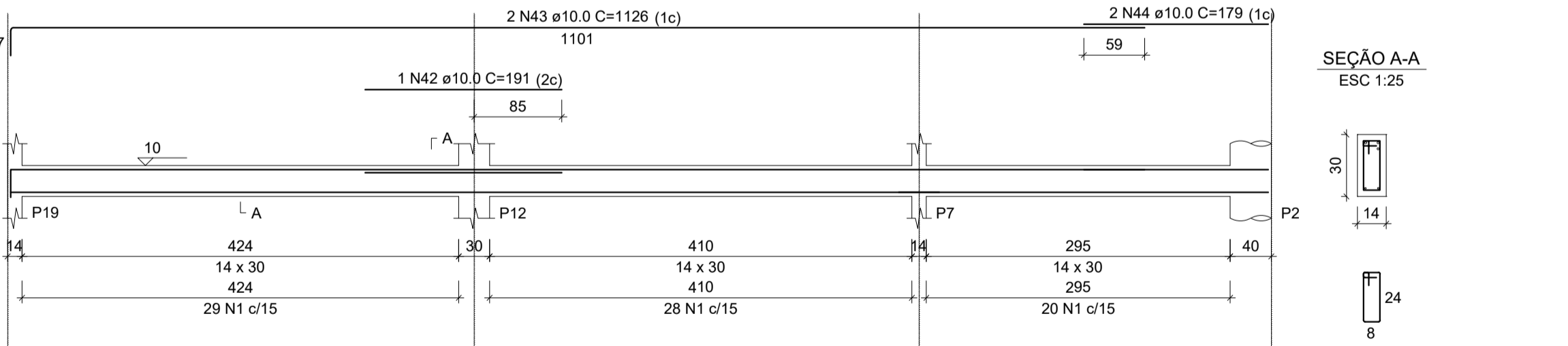
V11
ESC 1:50



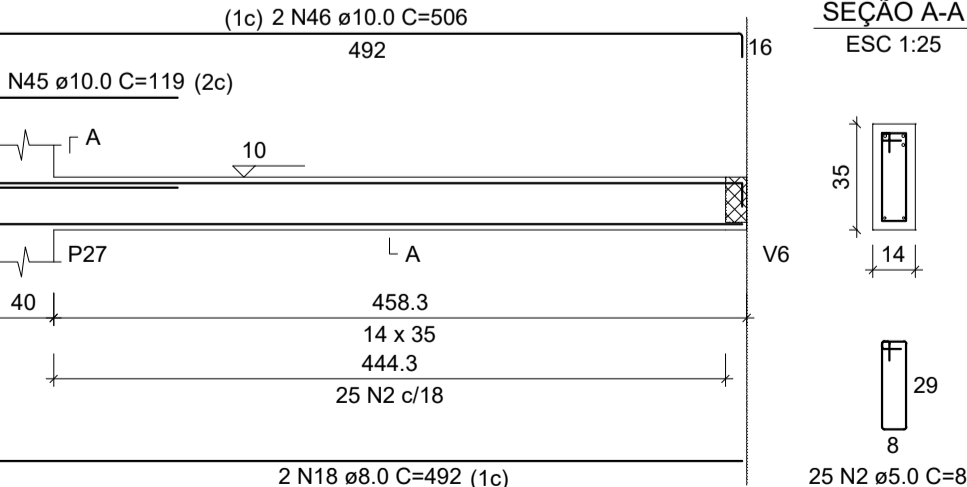
V12
ESC 1:50



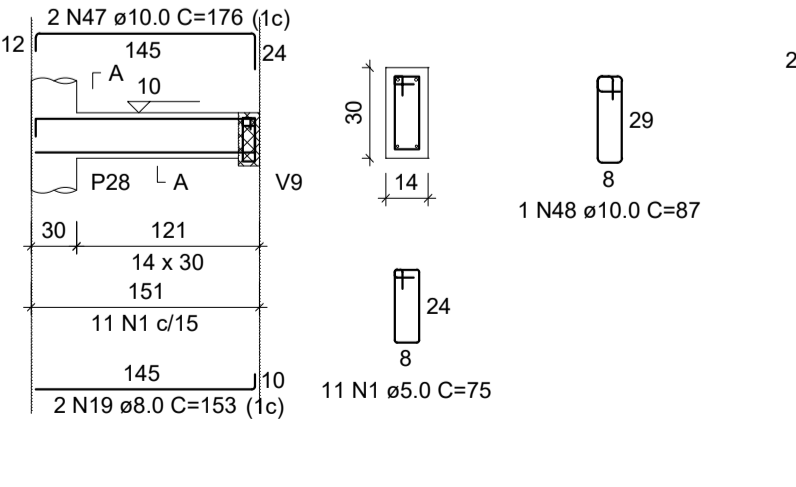
V13
ESC 1:50



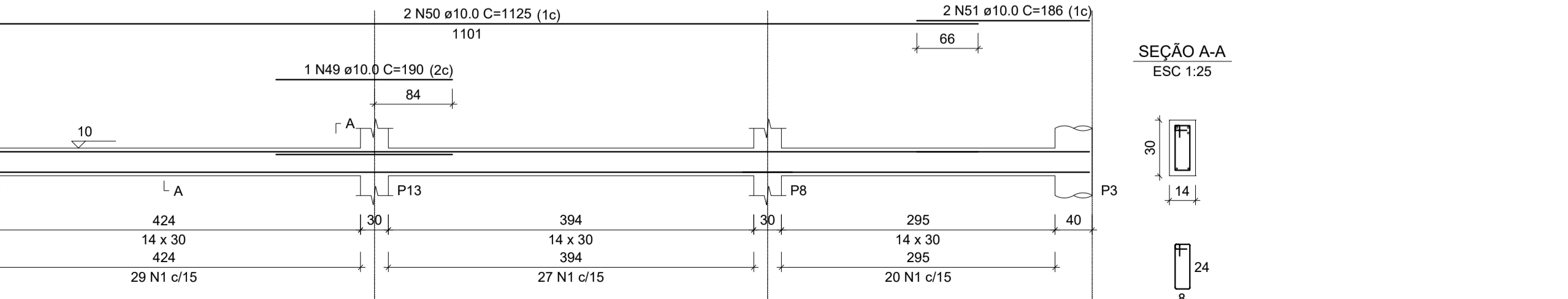
V14
ESC 1:50



V15
ESC 1:50



V16
ESC 1:50



RELAÇÃO DO AÇO

AÇO	N	DIAM (mm)	QUANT	C.UNIT (cm)	C.TOTAL (cm)
CA80	1	5.0	717	75	53775
CA85	2	5.0	50	4250	21250
CA90	3	8.0	2	939	1878
CA95	4	8.0	2	349	698
CA100	5	8.0	3	224	448
CA105	6	8.0	2	253	506
CA110	7	8.0	2	428	856
CA115	8	8.0	2	462	924
CA120	9	8.0	2	373	746
CA125	10	8.0	2	380	760
CA130	11	8.0	2	420	840
CA135	12	8.0	2	910	1820
CA140	13	8.0	2	366	732
CA145	14	8.0	2	1102	2204
CA150	15	8.0	2	154	308
CA155	16	8.0	2	802	1604
CA160	17	8.0	2	359	718
CA165	18	8.0	2	492	984
CA170	19	8.0	2	153	306
CA175	20	8.0	2	901	1802
CA180	21	8.0	2	374	748
CA185	22	10.0	2	964	1928
CA190	23	10.0	2	379	758
CA195	24	10.0	2	1157	2314
CA200	25	10.0	2	174	348
CA205	26	10.0	4	1162	4648
CA210	27	10.0	2	203	406
CA215	28	10.0	2	977	1954
CA220	29	10.0	2	371	742
CA225	30	10.0	1	406	406
CA230	31	10.0	2	193	386
CA235	32	10.0	3	153	459
CA240	33	10.0	2	360	720
CA245	34	10.0	2	935	1870
CA250	35	10.0	2	349	698
CA255	36	10.0	2	350	700
CA260	37	10.0	1	161	161
CA265	38	10.0	2	386	772
CA270	39	10.0	1	128	128
CA275	40	10.0	2	455	910
CA280	41	10.0	2	506	1012
CA285	42	10.0	1	191	191
CA290	43	10.0	2	1126	2252
CA295	44	10.0	2	179	358
CA300	45	10.0	1	119	119
CA305	46	10.0	2	506	1012
CA310	47	10.0	2	176	352
CA315	48	10.0	1	87	87
CA320	49	10.0	1	190	190
CA325	50	10.0	2	1125	2250
CA330	51	10.0	2	186	372
CA335	52	12.5	2	382	764
CA340	53	12.5	1	161	161
CA345	54	12.5	2	1158	2316
CA350	55	12.5	2	211	422
CA355	56	12.5	2	449	898

RESUMO DO AÇO

AÇO	DIAM (mm)	C.TOTAL (m)	PESO + 10% (kg)
CA50	8.0	190.8	82.8
CA55	10.0	285	193.3
CA60	12.5	45.6	48.3
CA65	5.0	580.3	98.4
PESO TOTAL			
CA50		324.5	
CA60		98.4	

Volume de concreto (C-30) = 5.15 m³
Área de forma = 90.50 m²

GeoNorte
Projetos e Topografia

GEONORTE PROJETOS LTDA.
Av. Brasil, 79, sala 09, Centro - Xanxerê (SC) - 89820-000
www.geonorte.net.br / contato@geonorte.net.br
Telefone: (49) 3433-8176

PROJETO:
PROJETO ESTRUTURAL

LOCALIDADES:
MUNICÍPIO: Xanxerê ESTADO UF: SC
DATA: 03/2022 ESCALA: Indicada

Conteúdo:
ARMADURA DAS VIGAS BALDRAME

Folha:
05/11

Prop.: MUNICÍPIO DE XAVANTINA - SC
CNPJ: 83.009.878/0001-15

Resp. Téc.: CARLO ANTUNES DOS SANTOS
ENGENHEIRO CIVIL
CREA-SC 123.879-1

