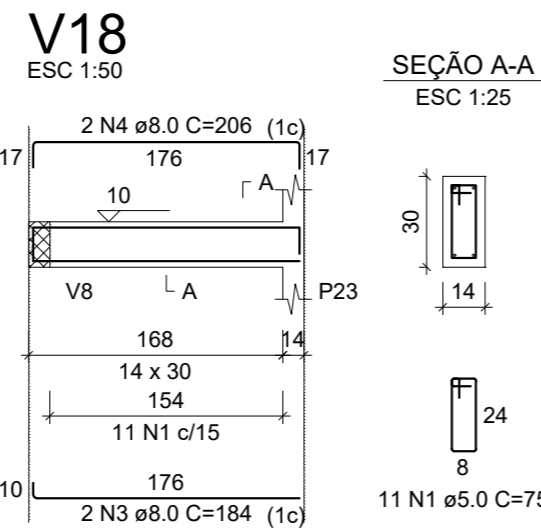
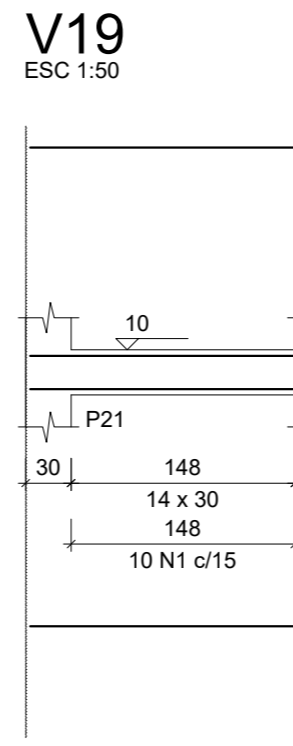


SEÇÃO A-A
ESC 1:25

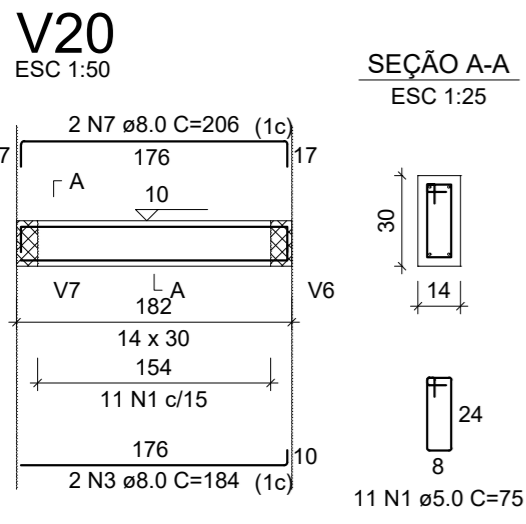
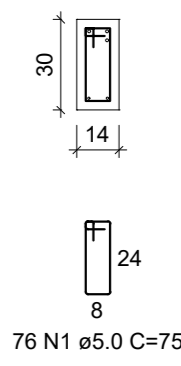
SUSPENSÃO V9
ESC 1:25



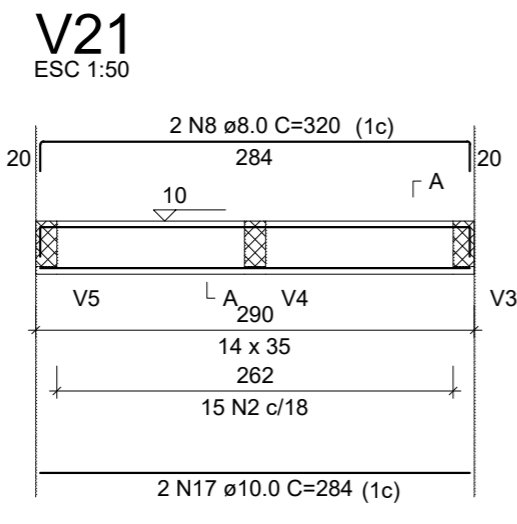
SEÇÃO A-A
ESC 1:25



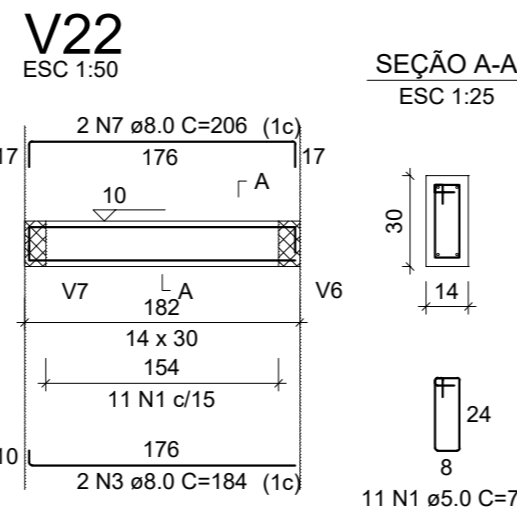
SEÇÃO A-A
ESC 1:25



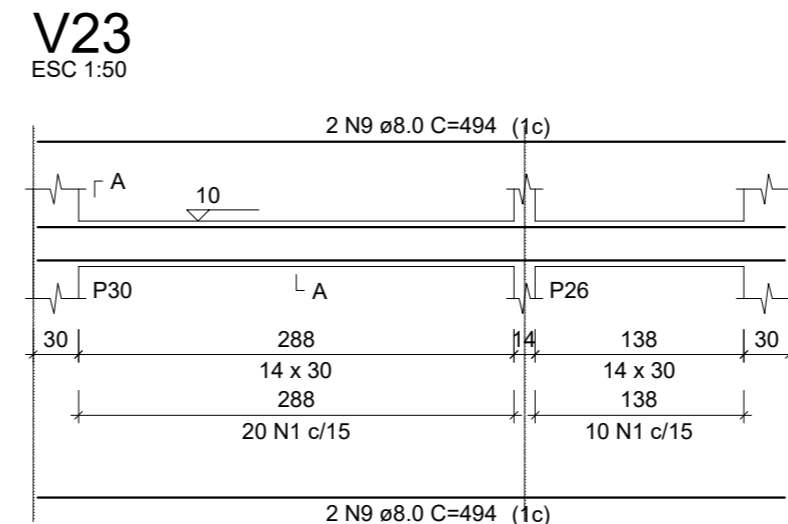
SEÇÃO A-A
ESC 1:25



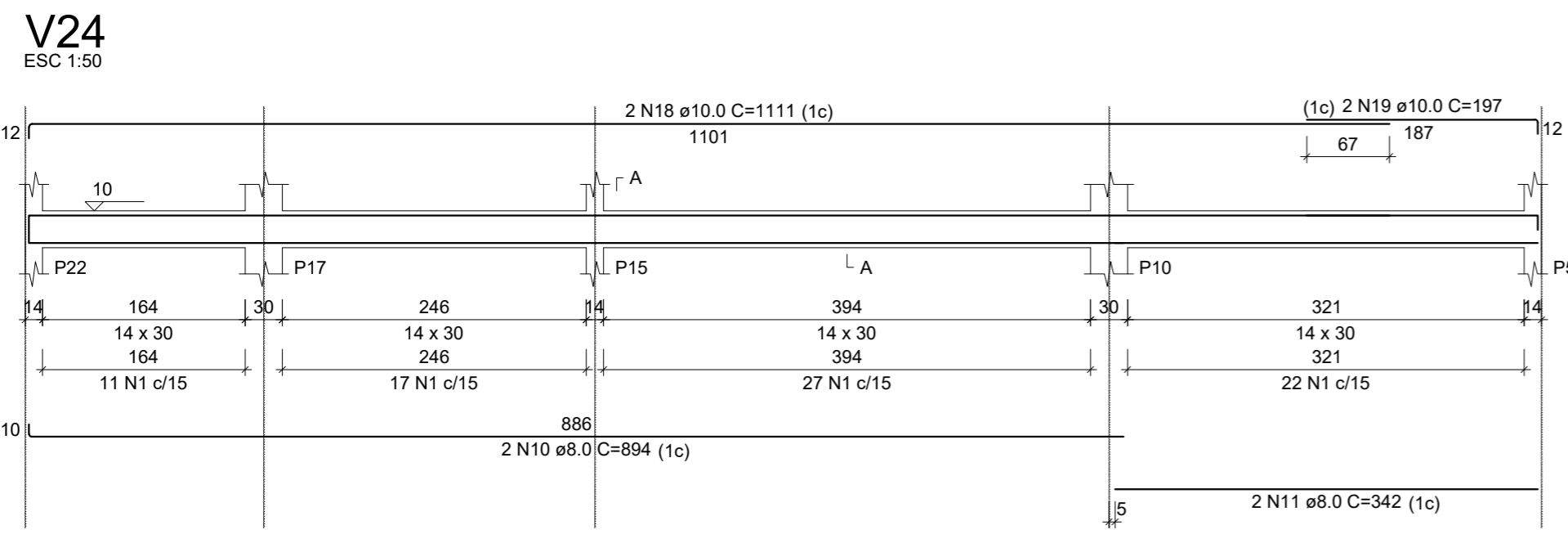
SEÇÃO A-A
ESC 1:25



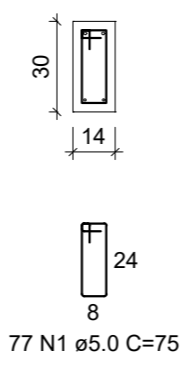
SEÇÃO A-A
ESC 1:25



SEÇÃO A-A
ESC 1:25



SEÇÃO A-A
ESC 1:25



RELAÇÃO DO AÇO

AÇO	N	DIAM (mm)	QUANT	C.UNIT (cm)	C.TOTAL (cm)
CA60	1	5.0	240	75	18000
CA60	2	5.0	15	85	1275
CA50	3	8.0	6	184	1104
CA50	4	8.0	2	206	412
CA50	5	8.0	2	902	1804
CA50	6	8.0	2	326	652
CA50	7	8.0	4	206	824
CA50	8	8.0	2	320	640
CA50	9	8.0	4	494	1976
CA50	10	8.0	2	894	1788
CA50	11	8.0	2	342	684
CA50	12	10.0	2	326	652
CA50	13	10.0	1	153	153
CA50	14	10.0	1	166	166
CA50	15	10.0	2	1101	2202
CA50	16	10.0	2	187	374
CA50	17	10.0	2	284	568
CA50	18	10.0	2	1111	2222
CA50	19	10.0	2	197	394
CA50	20	12.5	2	357	714

RESUMO DO AÇO

AÇO	DIAM (mm)	C.TOTAL (m)	PESO + 10% (kg)
CA50	8.0	98.8	42.9
CA50	10.0	67.3	45.6
CA50	12.5	7.1	7.6
CA60	5.0	192.8	32.7
PESO TOTAL (kg)			
CA50		96.1	
CA60		32.7	

Volume de concreto (C-30) = 1.75 m³
Área de forma = 30.79 m²

GeoNorte Projetos e Topografia
GEONORTE PROJETOS LTDA.
Av. Brasil, 79, sala 09, Centro - Xanxerê (SC) - 89820-000
www.geonorte.net.br / contato@geonorte.net.br
Telefone: (49) 3433-8176

PROJETO:
PROJETO ESTRUTURAL

LOCALIDADES:
MUNICÍPIO: Xavantina ESTADO UF: SC
DATA: 03/2022 ESCALA: Indicada

Conteúdo:
ARMADURA DAS VIGAS BALDRAME

Folha:
06/11

Prop.: _____
MUNICÍPIO DE XAVANTINA - SC
CNPJ: 83.009.878/0001-15

Resp. Téc.: _____
CARLO ANTUNES DOS SANTOS
ENGENHEIRO CIVIL
CREA-SC 123.879-1