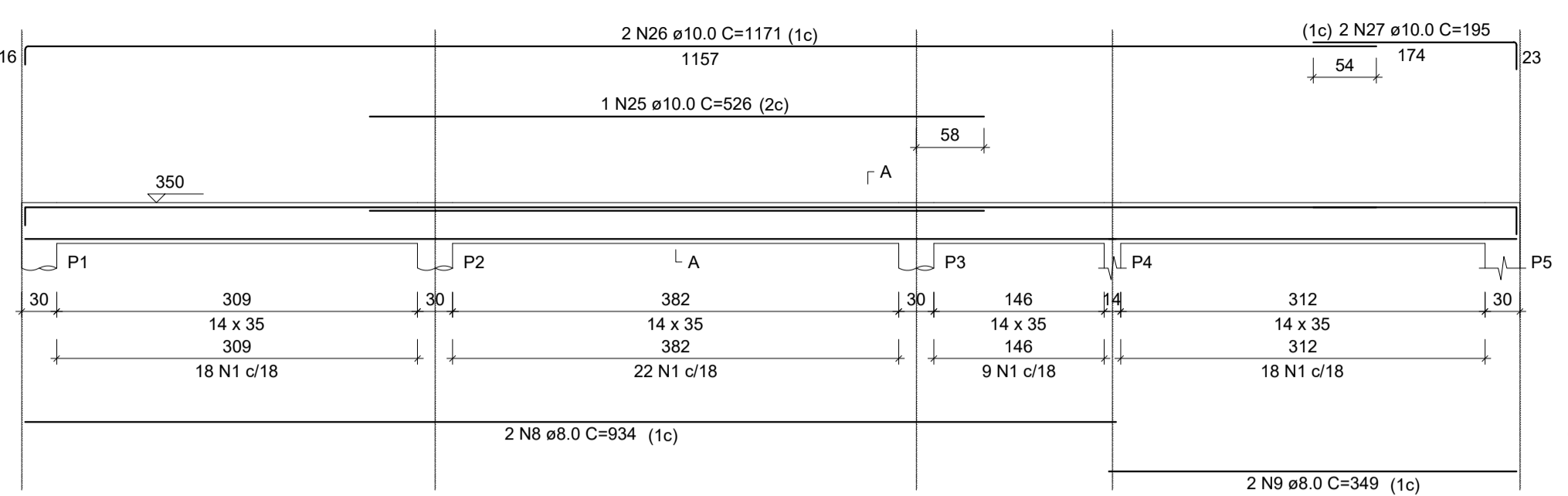
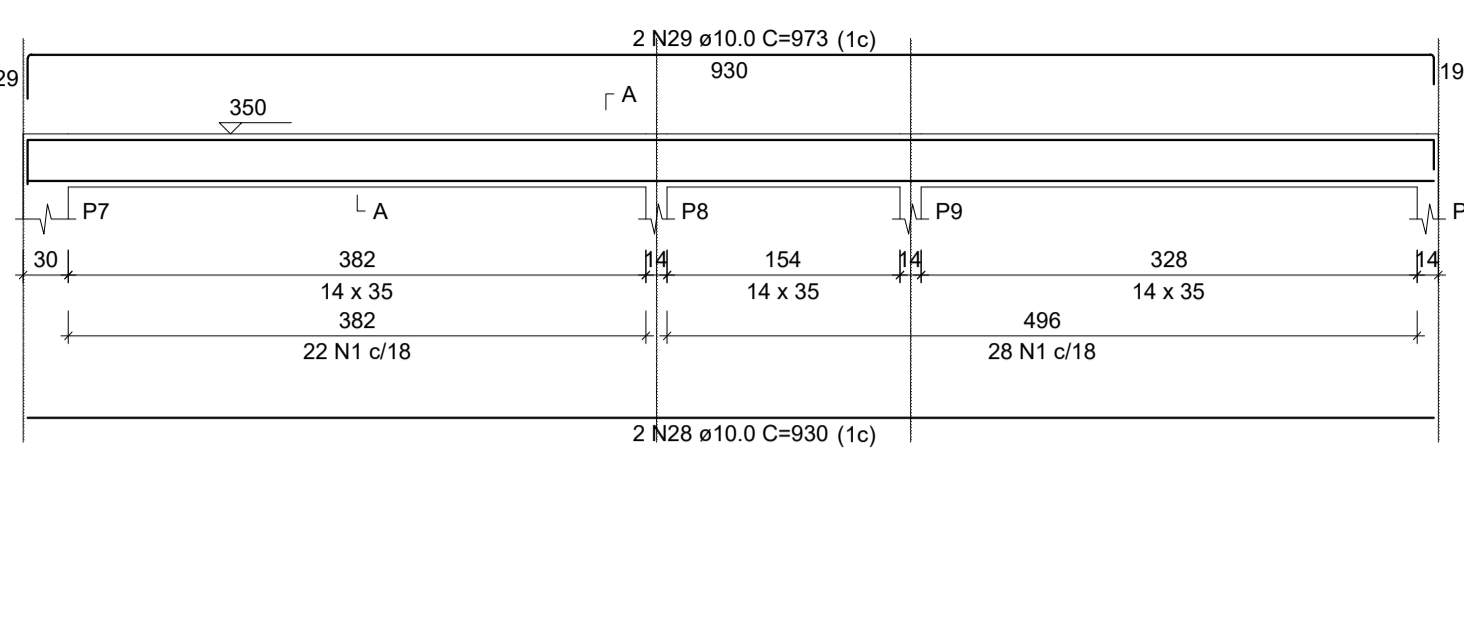


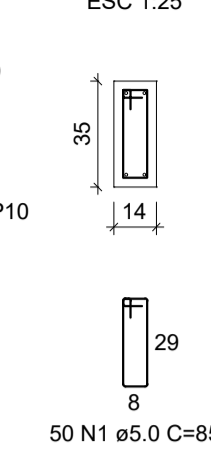
V1
ESC 1:50



V2
ESC 1:50



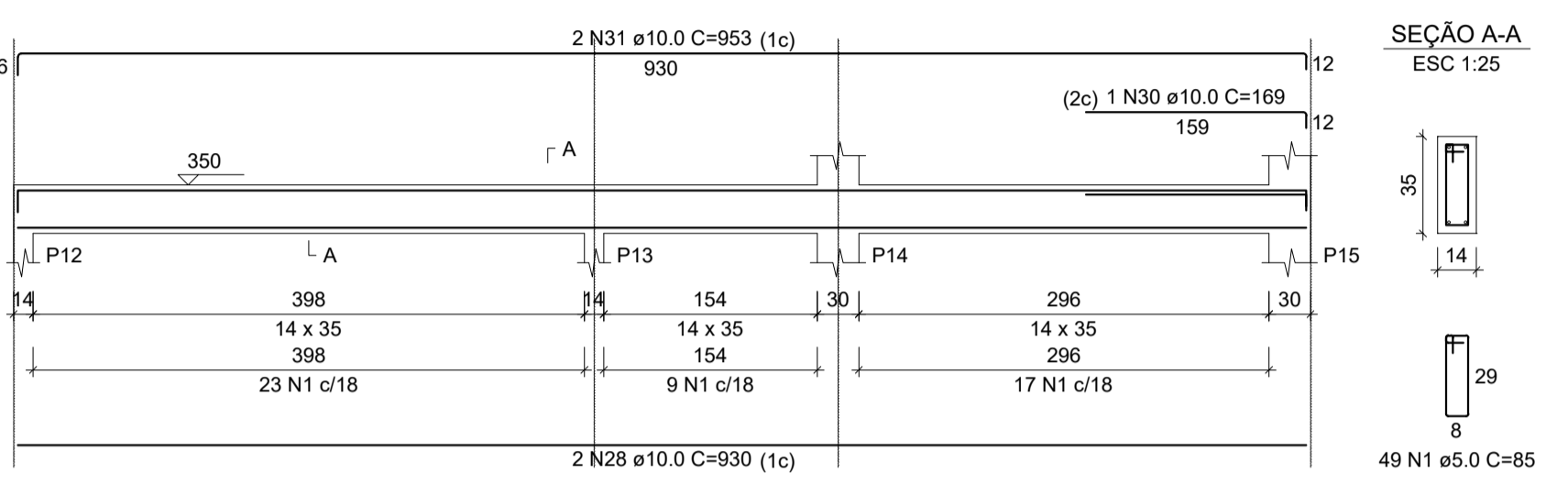
SEÇÃO A-A
ESC 1:25



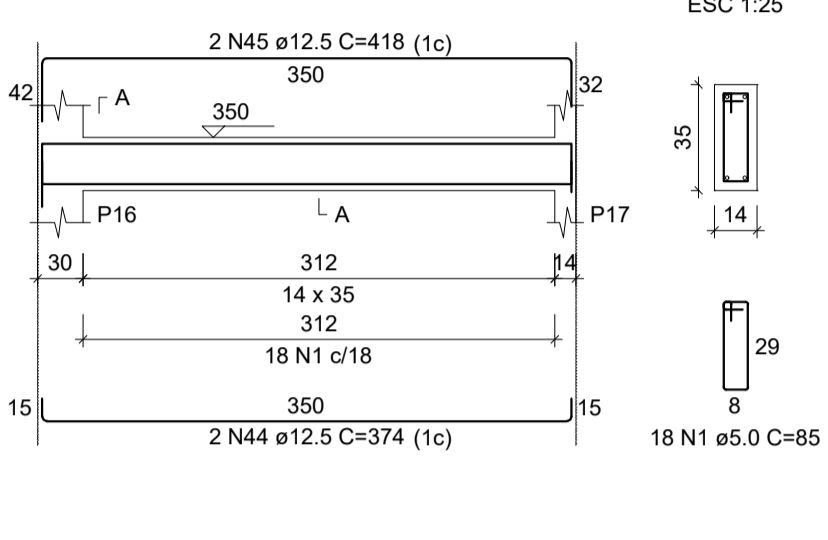
RELAÇÃO DO AÇO

AÇO	N	DIAM (mm)	QUANT	C.UNIT (cm)	C.TOTAL (cm)
CA60	1	5.0	343	85	29155
V4	2	5.0	180	95	17100
V7	3	5.0	98	75	7350
V10	4	6.3	53	96	5088
V13	5	6.3	4	420	1680
V16	6	6.3	4	350	1400
	7	6.3	4	498	1992
	8	8.0	2	934	1868
	9	8.0	2	349	698
	10	8.0	2	350	700
	11	8.0	2	88	176
	12	8.0	2	132	264
	13	8.0	2	505	1010
	14	8.0	2	214	428
	15	8.0	1	137	137
	16	8.0	2	253	506
	17	8.0	2	612	1224
	18	8.0	2	910	1820
	19	8.0	2	366	732
	20	8.0	2	1117	2234
	21	8.0	2	169	338
	22	8.0	2	320	640
	23	8.0	2	356	712
	24	8.0	2	274	548
	25	10.0	1	526	526
	26	10.0	2	1111	2222
	27	10.0	2	195	390
	28	10.0	4	930	3720
	29	10.0	2	973	1946
	30	10.0	1	169	169
	31	10.0	2	953	1906
	32	10.0	2	386	772
	33	10.0	2	247	494
	34	10.0	2	430	860
	35	10.0	1	137	137
	36	10.0	2	467	934
	37	10.0	1	256	256
	38	10.0	2	462	924
	39	10.0	1	273	273
	40	10.0	2	439	878
	41	10.0	2	885	1770
	42	10.0	2	342	684
	43	10.0	1	97	97
	44	12.5	2	374	748
	45	12.5	2	418	836
	46	12.5	2	937	1874
	47	12.5	2	352	704
	48	12.5	1	195	195
	49	12.5	2	1169	2338
	50	12.5	2	218	436
	51	12.5	1	153	153
	52	12.5	2	476	952
	53	12.5	2	640	1280
	54	12.5	2	1112	2224
	55	12.5	2	212	424
	56	12.5	2	504	1008
	57	12.5	1	168	168
	58	12.5	2	537	1074
	59	12.5	1	272	272
	60	12.5	2	310	620

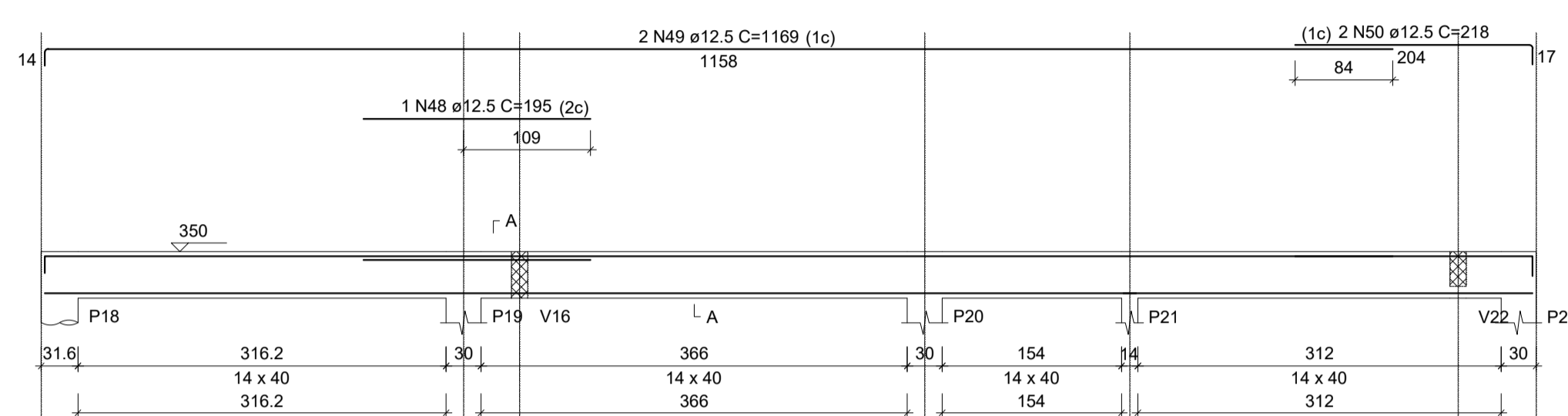
V3
ESC 1:50



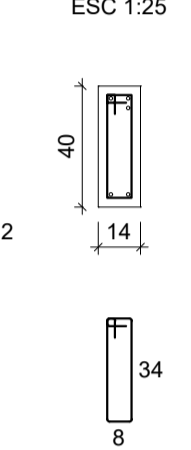
V4
ESC 1:50



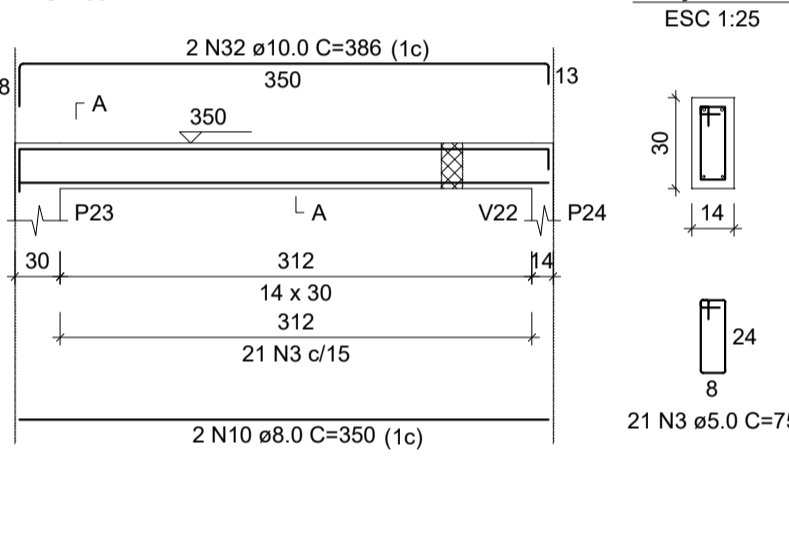
V5
ESC 1:50



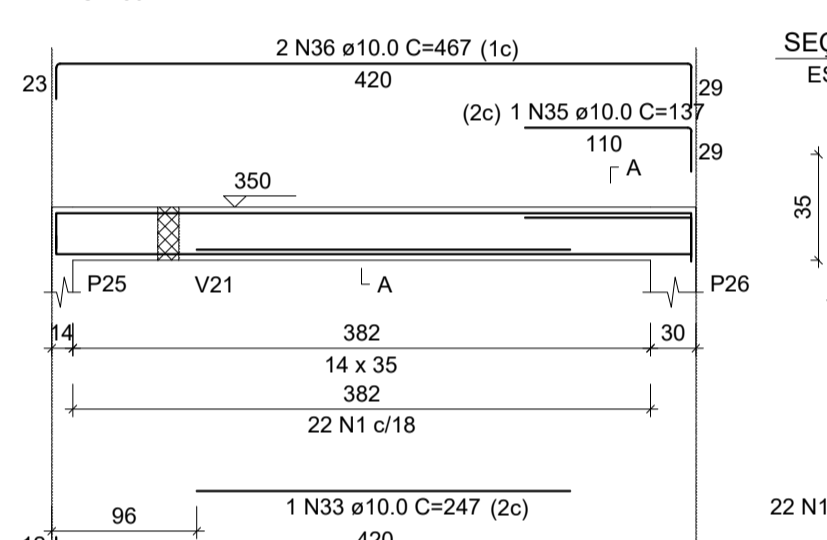
SEÇÃO A-A
ESC 1:25



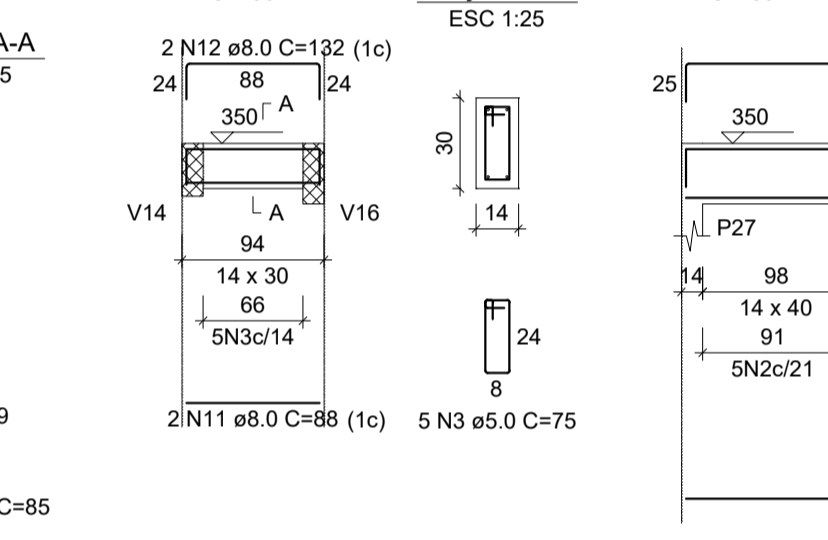
V6
ESC 1:50



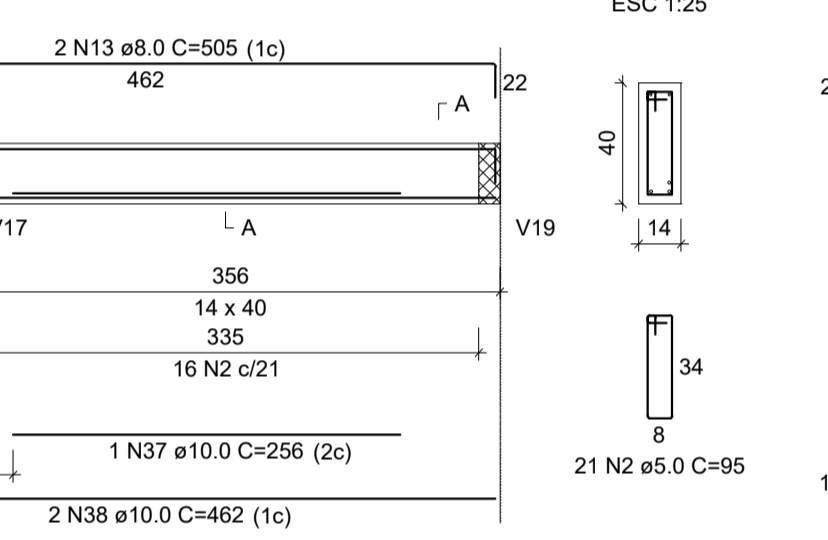
V7
ESC 1:50



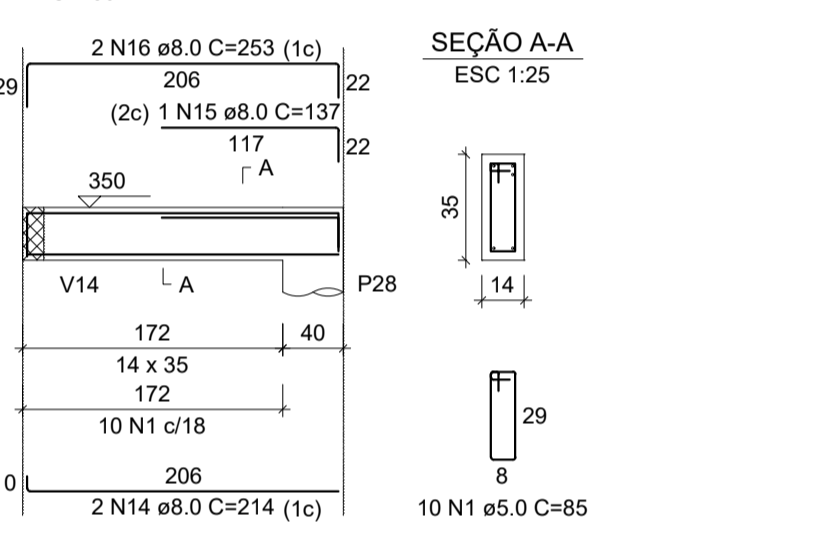
V8
ESC 1:50



V9
ESC 1:50



V10
ESC 1:50



SEÇÃO A-A
ESC 1:25

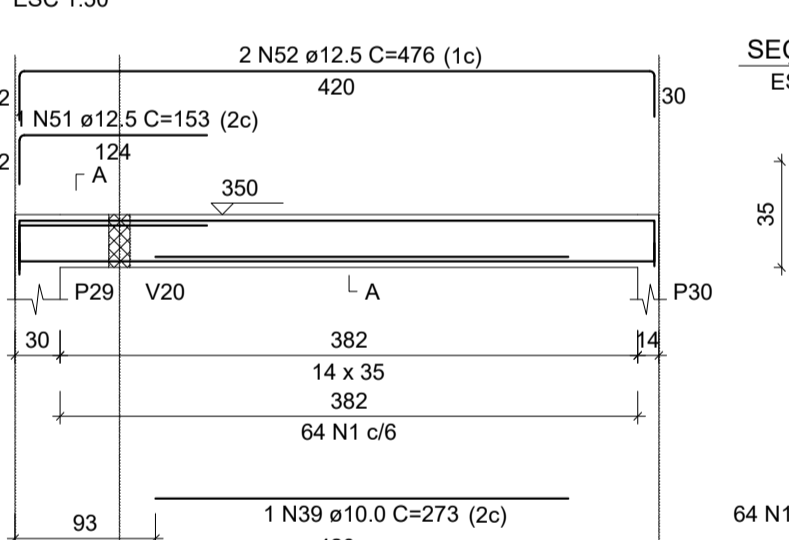


RESUMO DO AÇO

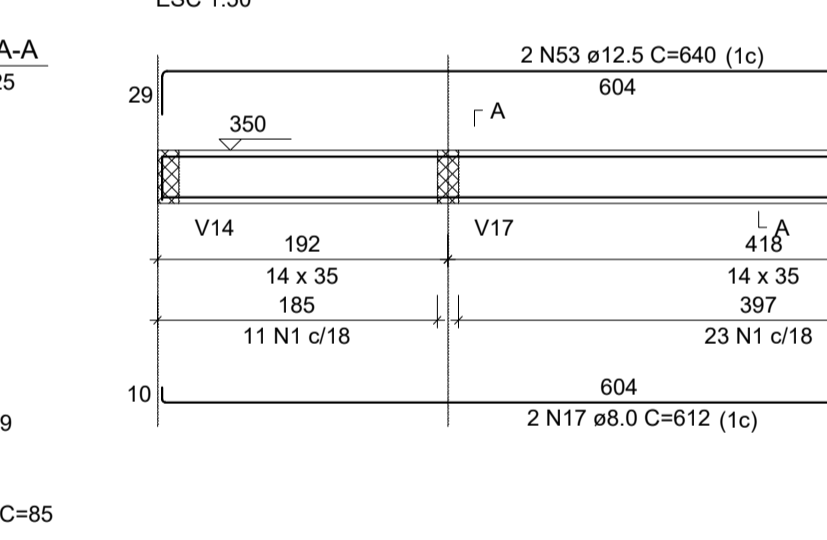
AÇO	DIAM (mm)	C.TOTAL (m)	PESO + 10% (kg)
CA50	6.3	101.6	27.3
	8.0	140.3	60.9
	10.0	188.3	127.7
	12.5	153.1	162.2
CA60	5.0	536	90.9
PESO TOTAL (kg)			
CA50		378.2	
CA60		90.9	

Volume de concreto (C-30) = 5.48 m³
Área de forma = 93.61 m²

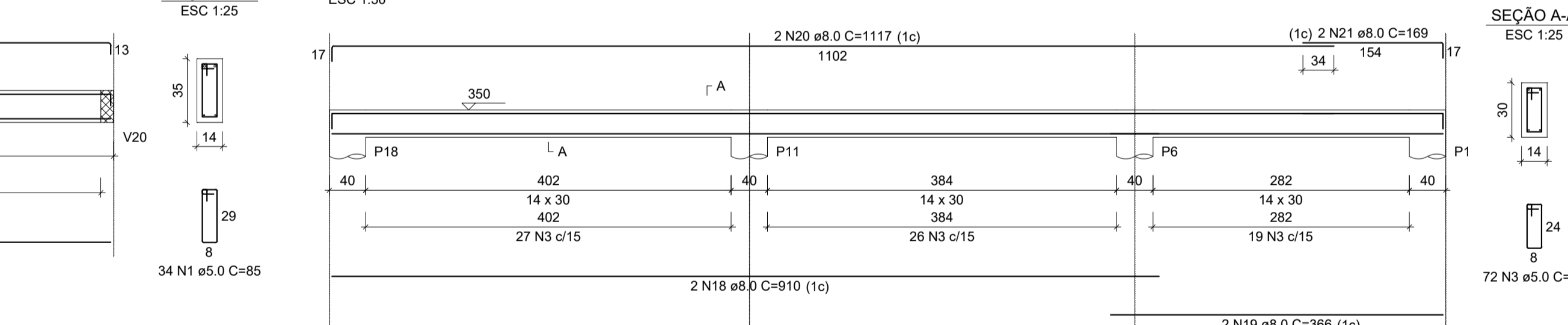
V11
ESC 1:50



V12
ESC 1:50



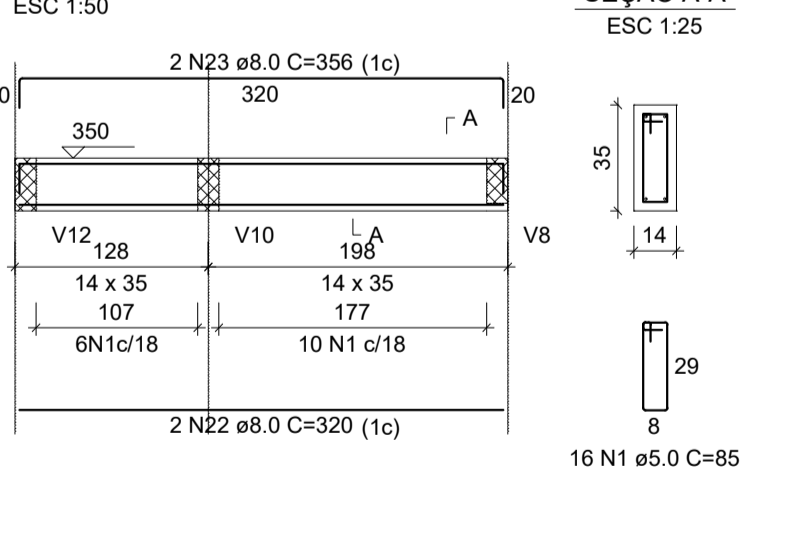
V13
ESC 1:50



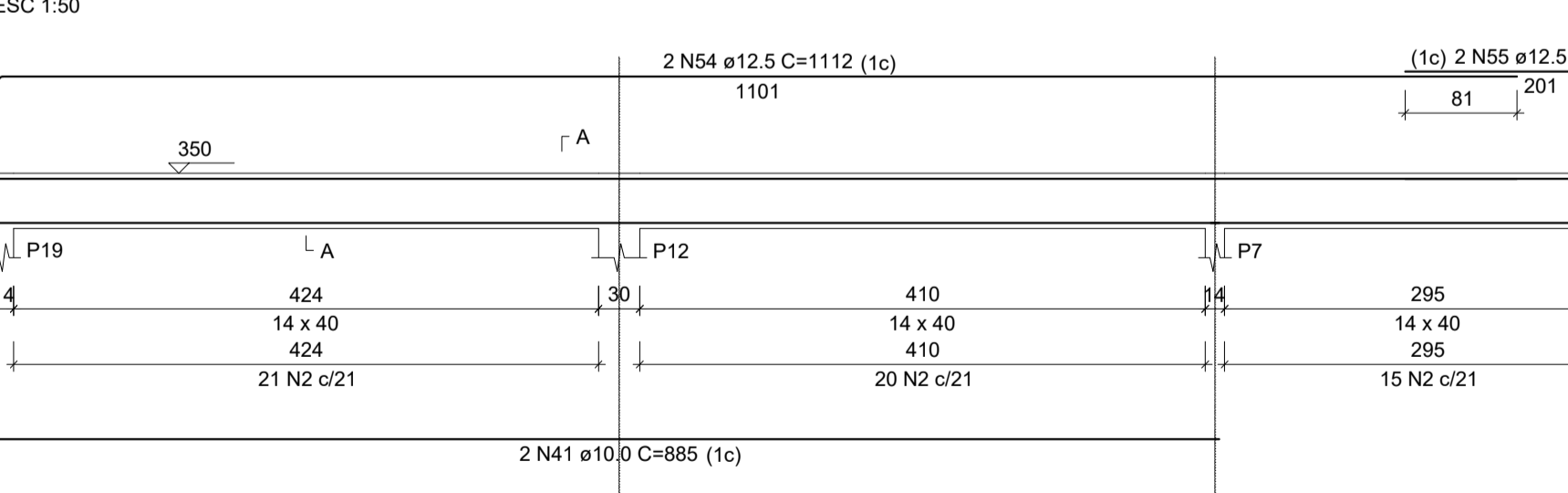
SEÇÃO A-A
ESC 1:25



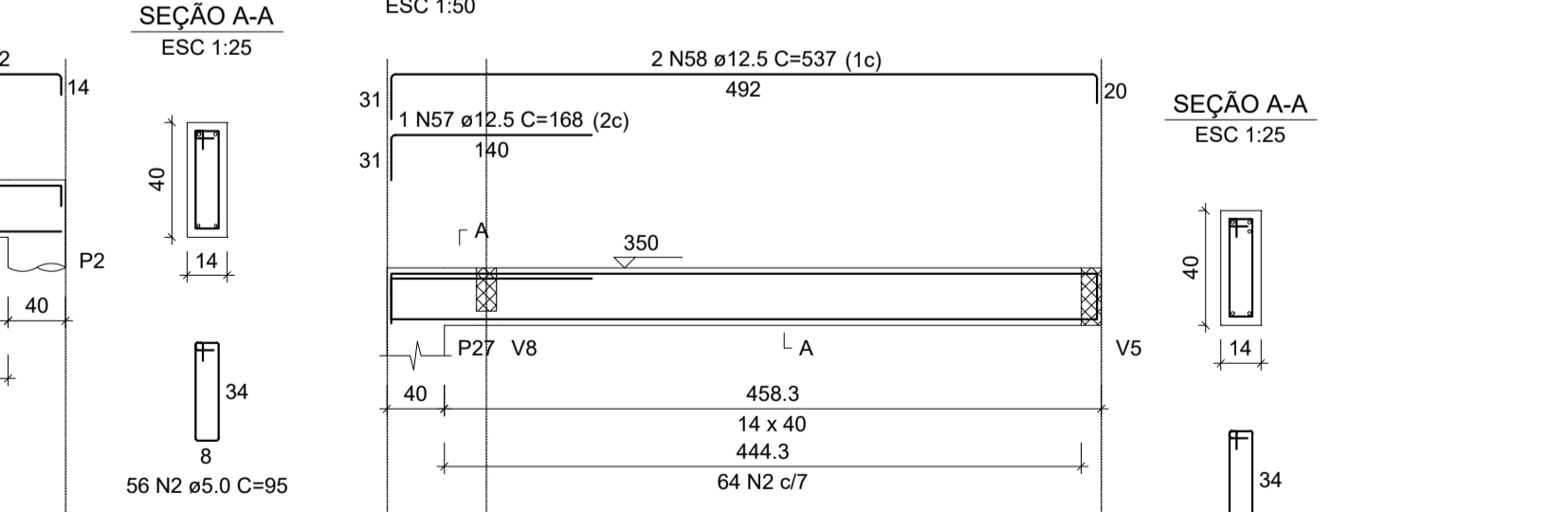
V14
ESC 1:50



V15
ESC 1:50



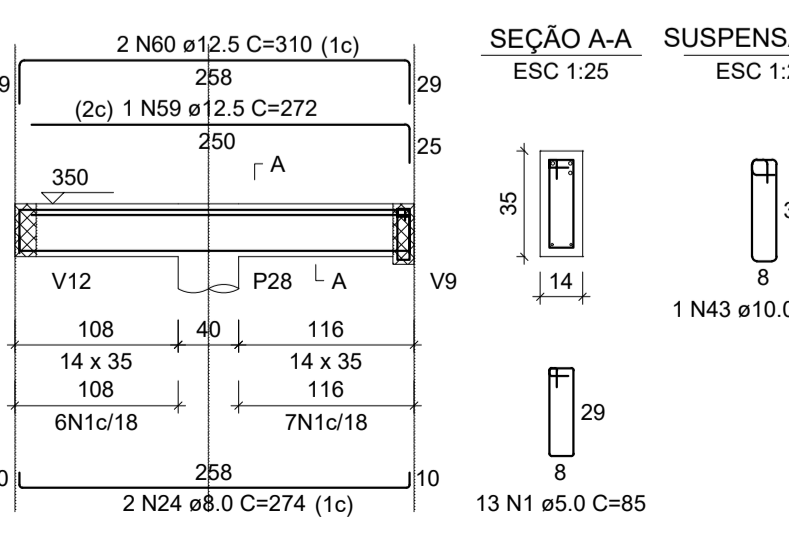
V16
ESC 1:50



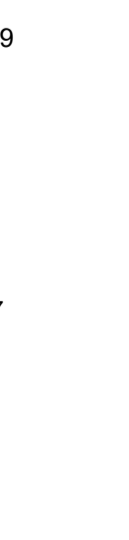
SEÇÃO A-A
ESC 1:25



V17
ESC 1:50



SUSPENSÃO V9
ESC 1:25



GeoNorte Projetos e Topografia
GEONORTE PROJETOS LTDA.
 Av. Brasil, 79, sala 09, Centro - Xanxerê (SC) - 89820-000
 www.geonorte.net.br / contato@geonorte.net.br
 Telefone: (49) 3433-8176

PROJETO: **PROJETO ESTRUTURAL**

LOCALIDADES: Xavantina
 MUNICÍPIO: Xavantina
 DATA: 03/2022
 ESTADO UF: SC
 ESCALA: Indicada

Conteúdo: ARMADURA DAS VIGAS SUPERIORES
 Folha: **07/11**

Prop.: MUNICÍPIO DE XAVANTINA - SC
 CNPJ: 83.009.878/0001-15
 Resp. Téc.: CARLO ANTUNES DOS SANTOS
 ENGENHEIRO CIVIL
 CREA-SC 123.879-1