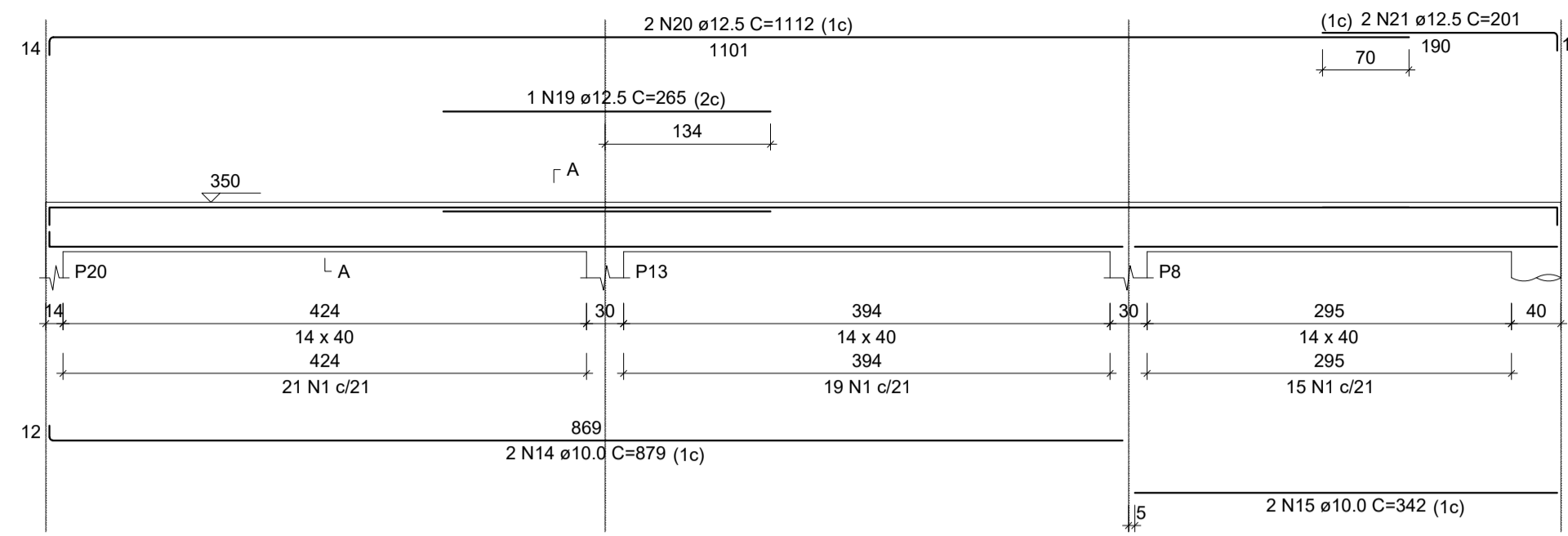
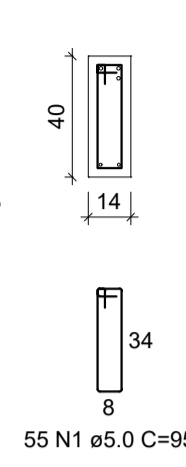


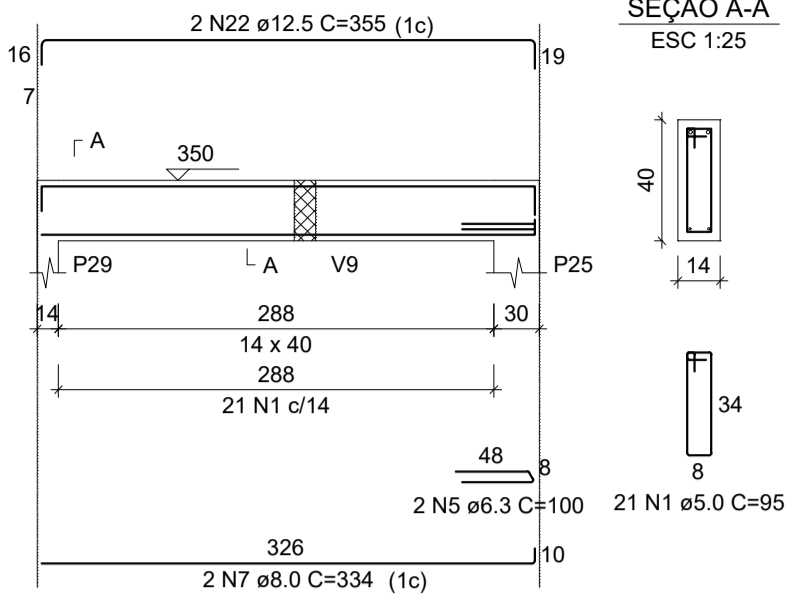
V18  
ESC 1:50



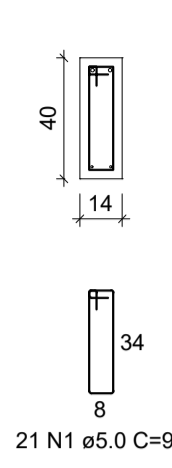
SEÇÃO A-A  
ESC 1:25



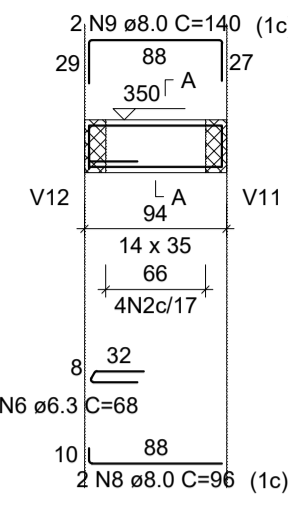
V19  
ESC 1:50



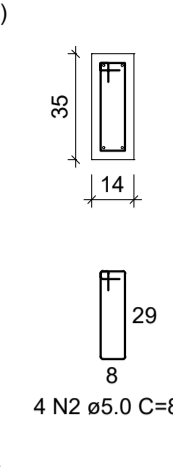
SEÇÃO A-A  
ESC 1:25



V20  
ESC 1:50



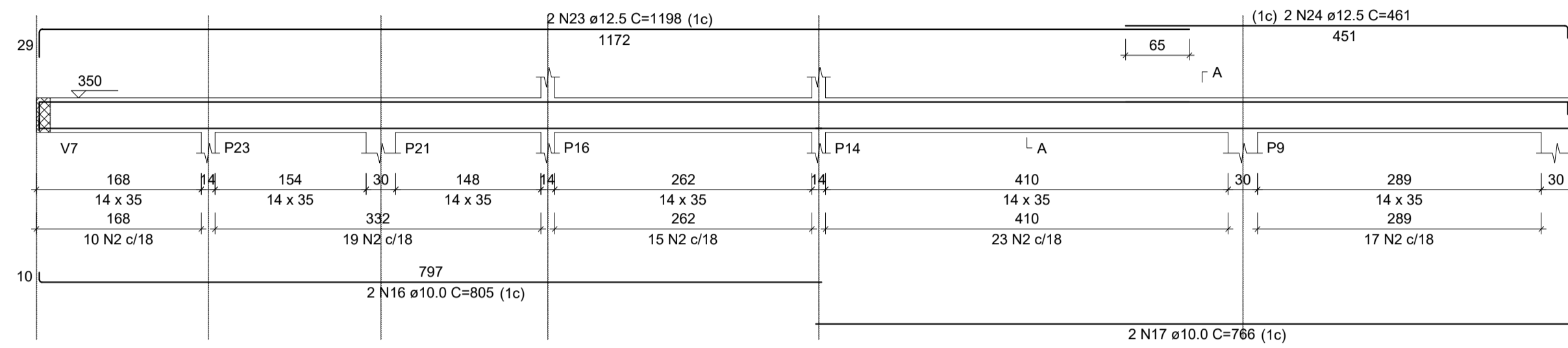
SEÇÃO A-A  
ESC 1:25



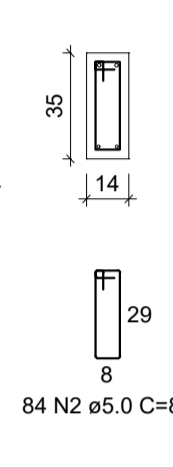
RELAÇÃO DO AÇO

AÇO	N	DIAM (mm)	QUANT	C.UNIT (cm)	C.TOTAL (cm)
CA60	1	5.0	76	95	7220
	2	5.0	237	85	20145
	3	5.0	41	75	3075
CA50	4	6.3	4	329	1316
	5	6.3	2	100	200
	6	6.3	1	68	68
	7	8.0	2	334	668
	8	8.0	2	96	192
	9	8.0	2	140	280
	10	8.0	2	184	368
	11	8.0	2	206	412
	12	8.0	2	494	988
	13	8.0	2	529	1058
	14	10.0	2	879	1758
	15	10.0	4	342	1368
	16	10.0	2	805	1610
	17	10.0	2	766	1532
	18	10.0	2	242	484
	19	12.5	1	265	265
	20	12.5	2	1112	2224
	21	12.5	2	201	402
	22	12.5	2	355	710
	23	12.5	2	1198	2396
	24	12.5	2	461	922
	25	12.5	2	723	1446
	26	12.5	1	224	224
	27	12.5	2	1120	2240
	28	12.5	2	228	456

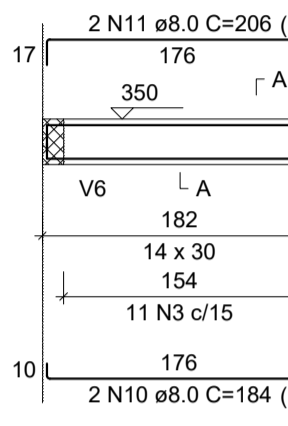
V21  
ESC 1:50



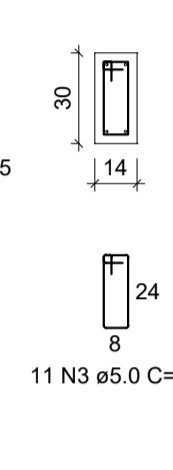
SEÇÃO A-A  
ESC 1:25



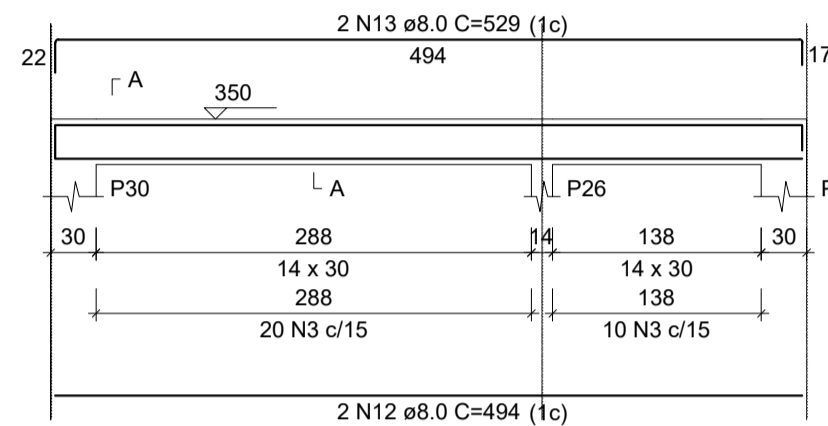
V22  
ESC 1:50



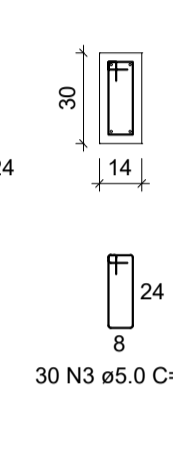
SEÇÃO A-A  
ESC 1:25



V23  
ESC 1:50



SEÇÃO A-A  
ESC 1:25

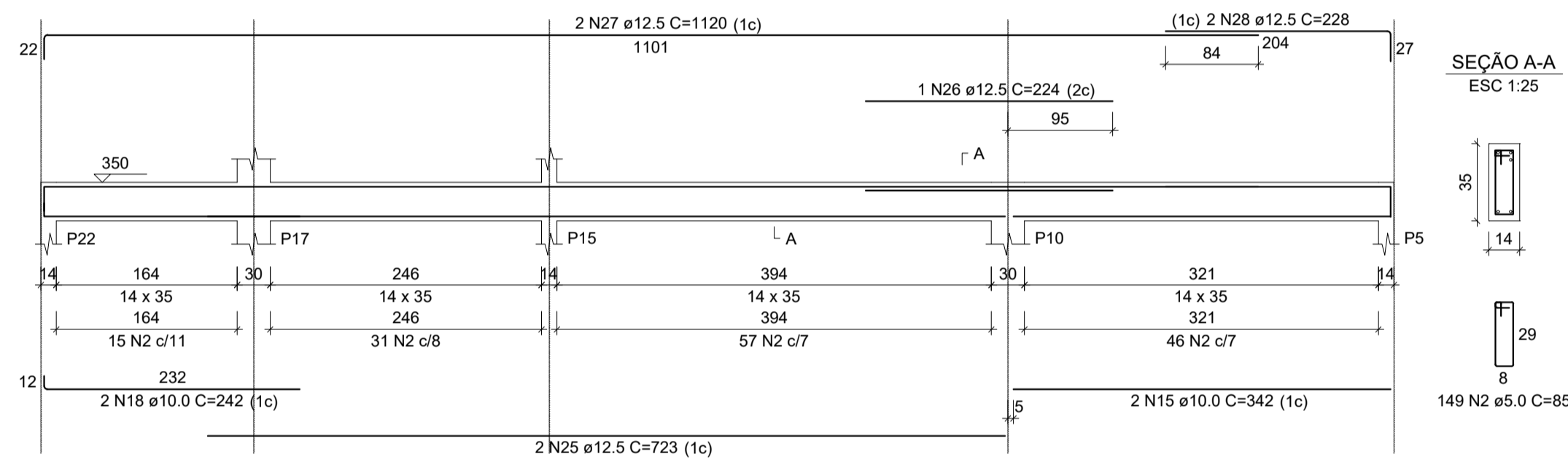


RESUMO DO AÇO

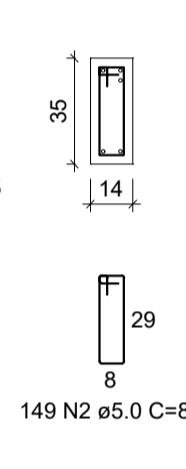
AÇO	DIAM (mm)	C.TOTAL (m)	PESO + 10% (kg)
CA50	6.3	15.8	4.3
	8.0	39.7	17.2
	10.0	67.5	45.8
	12.5	112.9	119.8
CA60	5.0	304.4	51.6
PESO TOTAL (kg)			
CA50		186.9	
CA60		51.6	

Volume de concreto (C-30) = 2.57 m³  
Área de forma = 43.93 m²

V24  
ESC 1:50

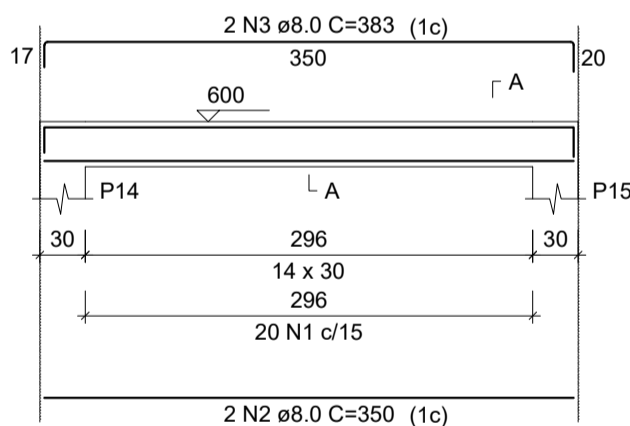


SEÇÃO A-A  
ESC 1:25

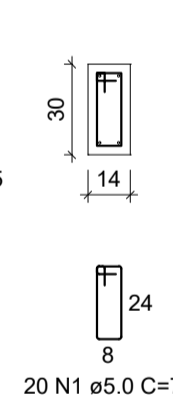


Vigas Caixa de água

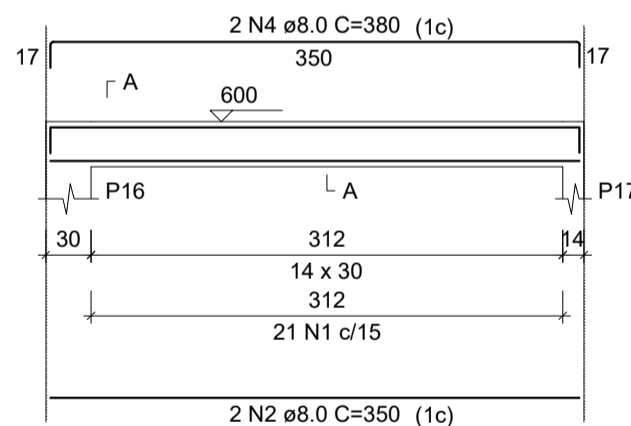
V1  
ESC 1:50



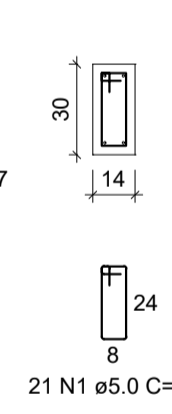
SEÇÃO A-A  
ESC 1:25



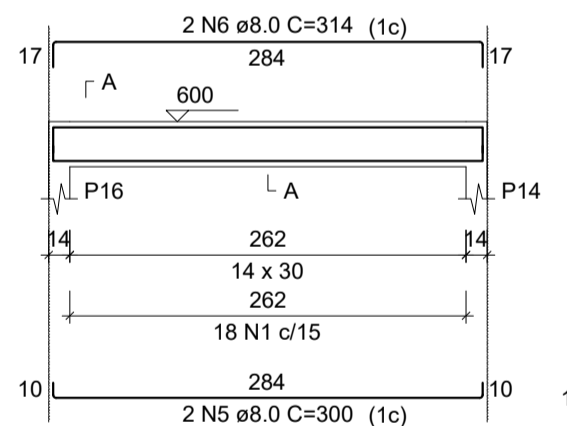
V2  
ESC 1:50



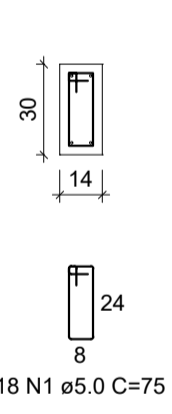
SEÇÃO A-A  
ESC 1:25



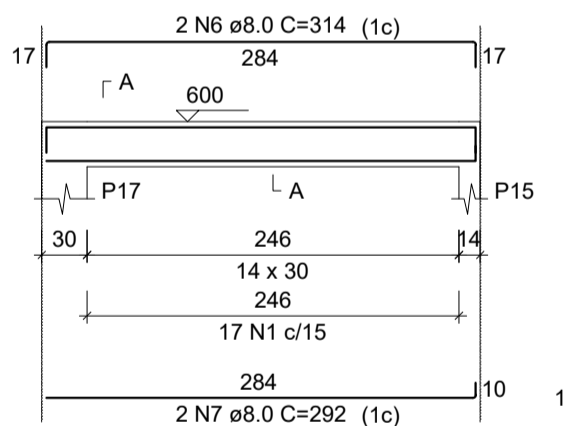
V3  
ESC 1:50



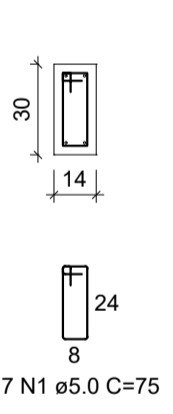
SEÇÃO A-A  
ESC 1:25



V4  
ESC 1:50



SEÇÃO A-A  
ESC 1:25



RELAÇÃO DO AÇO

AÇO	N	DIAM (mm)	QUANT	C.UNIT (cm)	C.TOTAL (cm)
CA60	1	5.0	76	75	5700
CA50	2	8.0	4	350	1400
	3	8.0	2	383	766
	4	8.0	2	380	760
	5	8.0	2	300	600
	6	8.0	4	314	1256
	7	8.0	2	292	584

RESUMO DO AÇO

AÇO	DIAM (mm)	C.TOTAL (m)	PESO + 10% (kg)
CA50	8.0	53.7	23.3
CA60	5.0	284	9.7
PESO TOTAL (kg)			
CA50		23.3	
CA60		9.7	

Volume de concreto (C-30) = 0.54 m³  
Área de forma = 9.56 m²



**GEONORTE PROJETOS LTDA.**  
Av. Brasil, 79, sala 09, Centro - Xanxerê (SC) - 89820-000  
www.geonorte.net.br / contato@geonorte.net.br  
Telefone: (49) 3433-8176

PROJETO:  
**PROJETO ESTRUTURAL**

LOCALIDADES:  
MUNICÍPIO: Xanxerê ESTADO UF: SC  
DATA: 03/2022 ESCALA: Indicada

Conteúdo:  
ARMADURA DAS VIGAS SUPERIORES  
ARMADURA DAS VIGAS DA CAIXA DE ÁGUA

Folha:  
**08/11**

Prop.:  
MUNICÍPIO DE XAVANTINA - SC  
CNPJ: 83.009.878/0001-15

Resp. Téc.:  
CARLO ANTUNES DOS SANTOS  
ENGENHEIRO CIVIL  
CREA-SC 123.879-1

